

Six Seek Nomination for U.S. Senate Seat

By JOHN C. McDONALD
Minneapolis Tribune Staff Writer

Perhaps you are one of those well-informed voters who knows whom he is going to vote for, right down the line, in the Sept. 14 Minnesota primary election.

Perhaps already you're acquainted with the background and views of the men and women who seek nomination for political office this year?

No? Well, maybe then the Minneapolis Tribune, in its Voters Guide, can give you information—supplied by the candidates themselves—which will help you choose the persons for whom you want to vote.

The first Voters Guide, published today, includes information about candidates for the United States senate, several state offices and two Hennepin county posts.

There are six senatorial candidates—three Republicans and three Democratic-Farmer-Laborites.

The Tribune asked them to give their views on six major issues. One candidate will survive in each party to battle it out in the general election Nov. 2 for the seat occupied by Sen. Hubert H. Humphrey, DFL.

Their answers, which follow, are numbered to correspond with the numbers in the question box at the top of the page.

DFL

A. B. GILBERT, 66, Mound. Married, two sons. Holds master's degree, formerly engaged in editorial work, college teacher six years, farmer, clerk department of labor, promoted support for constitutional government. Says he supported "exemption of employers of less than eight from unemployment tax; tariff protection for farmers, workmen."

A longtime conservative Republican, Gilbert says he filed on DFL ticket "to give voters a chance to express opinion on several related issues not supported by the present Democratic senator or, so far as I know, by Republican candidate Val Bjornson." Among issues, he says, are the Bricker amendment, a labor movement "out of constitutional bounds" and choice between restoration of constitutional government and labor party socialism. "The Eisenhower administration has raised doubts about our direction," Gilbert asserts, "and should have the opposition of conservative Democrats."

1. High price supports until adjustments to present-day market can be made. Some adjustments possible are full home market for our farmers, and cutting off of loans and other government aids to corporation farming. Stop the drift to labor party domination.

2. (a) No, alliances have kept our country from following a consistent, moral national policy; (b) no; (c) no; (d) no;

Duties of U.S. Senators

Congress writes the laws of the land. The senate—upper house of the bicameral body—has 96 members, two from each state. Senators are elected for six-year terms.

Senators are paid \$12,500 a year, plus \$2,500 tax-free expense money.

Questions Asked Candidates for United States Senate

The Minneapolis Tribune asked each candidate for United States senator the following questions. Answers below are numbered in the same sequence as the questions.

1. Should the federal government's long-range farm policy provide for (a) high, rigid price supports; (b) flexible price supports or (c) no price supports?
2. Should United States policy in Southeast Asia call for (a) an alliance of free Southeast Asia nations with free-world backing; (b) setting up a geographic line in Southeast Asia and attacking Communist-led forces if they cross it; (c) recognition of Red China; (d) admission of Red China to the United Nations security council or general assembly; (e) all-out support of Nationalist China?
3. Do you favor changes in the U.N. charter? If so, what changes?
4. Is it in the interest of the United States to protect non-Communist countries against Communist domination? Is use of American troops abroad, to stop Communist military aggression, justified? What measures would you favor to stop Communist political expansion?
5. Do you feel that our domestic loyalty and security program is working well or not?
6. Do you favor continuation of foreign military aid? Foreign economic aid?

(e) yes, within sensible limits.

3. Separation of our armed forces from any control by the U.N. soon as possible. Expulsion of Russia and any other country lacking our principles as to law and order, private enterprise, citizen rights.

4. Yes, all Communist activity is directed to ruining our nationals abroad and taking control of us. Use of troops honestly and in time is advisable. Revival of morality and national spirit in our own country could save us from continuing to be catspaws.

5. It is not working well and has been derailed by the Eisenhower team. Our great weakness is Red formulas sold to us as liberal and progressive.

6. Very little of either. If a country will not provide safety for private capital, it should not get our tax money. Point IV spending, etc., has encouraged other nations to blackmail us. It pays in India to be pro-Communist. Secretary of State Dulles is too much the New Dealer. The remedy for the loss of domestic business due to cutting down foreign aids is an expansion of constructive spending in our own country. We will get wars if war spending and giving away tax money to others is essential to keep business going.

HUBERT H. HUMPHREY, 43, Minneapolis, United States senator since 1948. Married, four children. Graduate Denver College of Pharmacy; BA degree University of Minnesota, graduated magna cum laude, Phi Beta Kappa; MA degree Louisiana State university; honorary doctor of laws National University, Washington.

Mayor Minneapolis 1945-48, professor political science Macalester college, radio news commentator, government administrator, registered pharmacist.

Member American Political Science association, American Public Administration association, National Conference of Christians and Jews, American Pharmaceutical association, American Municipal association, national housing conference.

Serves on senate committees on foreign relations, agriculture and forestry, small business. Member President's commission on intergovernmental relations,

Democratic steering committee in senate.

Says: "Active leader housing and slum clearance, civil rights legislation, Hoover commission government reorganization plans. Spokesman for midwest agriculture in legislation aimed at price stability, conservation of resources, rural electrification, use of food abundance to aid underprivileged and support foreign policy. Sponsor Point Four, reciprocal trade policy, mutual security and North Atlantic treaty, Marshall plan, wheat for India and Pakistan."

1. I have consistently supported farm price supports at a level which is flexible, representing a relationship between the prices the farmers receive for what they sell as compared with prices they pay for what they buy.

Effective price supports, coupled with storage and adequate credit at reasonable interest rates, tend to stabilize the market, assure more orderly marketing and provide a fair return for production.

Price supports are designed not only for the economic benefit of agriculture, but also for the economic welfare of business depending on agricultural income and the consumer depending on adequate supplies of food and fiber at fair prices.

A long-range farm policy with a minimum of 90 per cent price supports tends to preserve the family-type farm, thereby contributing to social, political and economic stability. Important as they are, however, price supports are only one part of any long-range farm policy.

2. I support the formation of an alliance of free southeast Asiatic nations assisted through economic and military aid by the United States and our allies. This alliance, however, must be led and inspired by the Asiatic nations themselves.

Our military assistance should be in the form of arms and equipment plus the training of native manpower for the defense of their own countries. It is militarily and economically unwise for the United States to garrison every area of the world. We must call upon the free nations and those who join in alliance with us to supply manpower and whatever equipment is within their means.

I do not believe in recognizing Red China at this time,

Minneapolis Morning Tribune

PART 1

Voter's Guide

Prepared with the assistance of the
Citizens League of Greater Minneapolis

Minneapolis, Minn., Wednesday, September 8, 1954

or in admitting Red China to the United Nations. It would be helpful for the peace of the world if the United States, together with its allies, would make it clear that we will not tolerate aggression.

Nationalist China should be a part of a southeast Asiatic alliance as the representatives of Formosa and the many free forces on the China mainland. I do not believe, however, in supporting a move by Nationalist China for the invasion of the China mainland.

3. I am at this moment a member of the senate foreign relations committee studying this matter and holding hearings on it.

4. It is in the interest of the United States to assist and protect non-Communist countries against Communist domination or aggression. As stated above, our immediate objective in a military sense should be the training and equipping of native forces in the free Asiatic countries.

The use of American forces must be measured and justified strictly on the basis of our own national security.

Our task in stopping communism must, however, be more than military, important as the military is. It must include also aid for the underprivileged peoples through technical assistance in Point Four as well as economic aid. We are committed to democratic principles and to freedom for all peoples.

And it must include the expansion of our programs of information, education and exchange of students, plus increased use of U.N. agencies in the fields of health, agriculture, technical assistance, education and cultural development.

5. I believe it is working rather well. There have been injustices, but many of them have been corrected. There is still the possibility of abuse, but I believe these possibilities can be corrected as well.

6. Yes. Our economic aid should be directed primarily toward the Near East and Far East and the Latin and South American areas. I have consistently supported a bipartisan program of mutual security.

HAROLD STROM, 49, 8544 Aldrich avenue S., Bloomington. Contractor, President Home Construction, Inc. Married, six children. Graduate South high school. Ran for mayor of Bloomington 1953.

1. Starting at 100 per cent parity for small farmer, graduating from there down according to size of farm.

2. Hard to answer any of above questions without time to study.

3. Yes. Cancel the veto. Make three-fourths majority binding.

4. Only so far as foreign treaties go. Communist political expansion can only be stopped through more equal distribution of wealth.

5. Yes, I think it is. Except if a person had been a Com-

munist and found his error, he should not be held as such.

6. Both, if necessary. Either one takes a lot of study to arrive at whether or not such measures are practicable and do both parties justice.

Republican

VAL BJORNSON, 48, 2906 Dorman avenue, Minneapolis, state treasurer since January 1951. Married, four children.



Bjornson

Graduate University of Minnesota. Formerly in newspaper and radio work, weekly newspaper editor, metropolitan editorial writer. Navy four years. Former member school board Minnetonka, Minn. Member

Masons. Says as treasurer he has maintained policy of investing idle state cash at highest possible return. "In current senate campaign," he says "I am supporting broad objectives of Eisenhower administration."

1. High rigid price supports should have been continued to ease transition during difficult cost-price "squeeze" affecting agriculture, but I feel the 82½ to 90 per cent compromise as to parity support levels for the least avoided presidential veto of an extension of 90 per cent supports. Have urged restoration of a portion of the sharp April 1 dairy price support drop.

2. (a) Favor alliance free Southeast Asia nations with free world backing; (b) at current stage, with colonialism issues still unclarified, would hesitate in drawing line on the map; (c) oppose recognition of Red China; (d) oppose admission Red China to U.N.; (e) limited support of Nationalist China.

3. Would support elimination of security council veto on purely procedural matters. Even though it is abused by Russia, I would retain the veto on more vital matters as a protective measure for the United States. Favor cautious revisionary steps to make the U.N. more workable in every field.

4. It certainly is in the interest of the United States to protect non-Communist countries against Communist domination, though there must be caution in extent to which commitments toward that end are carried. We should never be placed in the position of promising more than we can deliver. Use of our troops abroad in resisting Communist aggression in Korea was justified through our U.N. commitment not to permit unprovoked aggression to go unchallenged. To help check Communist political expansion, we must continue truthful news presentation and a worthy example of our own system's superiority.

5. It is working far better than in previous administrations.

6. Yes, foreign military aid should be continued, with other

Candidates

Continued on Page Two

Candidates

Continued from Page One

aid programs curtailed to reasonable limits.

ARTHUR D. RUSSELL, 74, 3236 Clinton avenue, Minneapolis, retired accountant. Married, two children. Served Spanish-American war. Taught school in South Dakota. Former city clerk Yankton, S. D., also clerked for county auditor, Yankton, accountant in disabled war vets relief administration St. Paul. Frequent candidate for office in Minneapolis and Hennepin county (auditor, treasurer, comptroller, mayor), three times ran for congress fifth district, for senate two years ago.



Russell

1. Price supports should be lowered gradually until eliminated entirely. I favor governmental cartel to buy and sell everything the farmer produces. Uncle Sam to absorb the loss or gain. Thus both producers and consumers would be fairly treated, all "deserving Republicans" given jobs and grain gamblers rendered impotent.

2. Red China should be recognized by the United States and admitted to the general assembly of the U.N. Too bad Chiang Kai-shek cannot be eased out of command at Formosa. We should beware of alliances with southeast Asia nations that are apt to involve us in war, but in no case should we adopt a policy of isolation nor should we "go it alone" in war.

3. The League of Nations should be re-activated and given teeth. After that the U.N. should be scrapped. France and Nationalist China took no part in the war and now may both become Communist-dominated overnight.

4. It is in our interest to protect non-Communist countries from Communist domination. But how? Use of United States troops in Europe is already committed. Backward, poverty-stricken nations should be helped to help themselves so that it will be harder for communism to get a "toehold" there. Mixing German troops with ours might be salutary for France.

5. Our domestic loyalty and security program is working all right. The Humphrey "death penalty" bill passed by the senate should be broadened to include all Nazis, Fascists and Communists and all who take orders from Formosa, Rome, Madrid and Moscow.

6. We should give military aid in Europe as promised and continue economic aid there as well. We might also help our Latin American neighbors economically, for we are regarded in South America as the aggressors in Truman's Korean war and tariff barriers incur enmity.

Our ultimatums have hurt our chances for friendly trade with them and our eight-year draft law frightens them for they are sufficiently astute to regard us as more of a slave state than a free nation. If we paid our GIs \$3 an hour for a 40-hour week with time and a half for overtime and double time for nights and Sundays we could eliminate the draft and most of our wars (their cost would be prohibitive) and regain the friendship of neighboring nations.

Two years ago I wired Adlai Stevenson to pressure Truman to urge creation of a Turkish army to relieve our boys in Korea under U.N. sponsorship. I sent copy by wire to Truman. Receipt was acknowledged the

day. Ike took office. No comment.

RICHARD S. (DICK) WILCOX, 66, 1917 Pinehurst avenue, St. Paul, president public relations and advertising firm. Married, two children. Army World War I. Studied journalism three years University of Minnesota, graduated school of agriculture. Former director of economic research for Land O'Lakes Creameries, Inc. State manager Thomas E. Dewey presidential campaign 1944 and 1948, member Taft campaign farm committee 1952. Member American Legion, Masons, Minnesota Horticultural society, American Rose society, Minnesota Rose Society. Farm editor St. Paul Sunday Pioneer Press 14 years, salesman Webb Publishing Co. which issues various farm publications.



Wilcox

1. High rigid supports at 90 per cent of parity or flexible supports at from 90 to 100 per cent, with efficient production control program to prevent unneeded surplus and make program self-supporting.

2. (a) Impossible without English support; (b) very bad, for it would keep us in hot water all the time; (c) absolutely not; (d) absolutely not; (e) we should have allowed Nationalist China to have furnished the troops to fight in Korea instead of sending our boys over there.

3. Yes, I want to see the charter changed to prohibit all compulsion guaranteeing the complete independence of every

Questions Asked Candidates for United States Senate

The Minneapolis Tribune asked each candidate for United States senator the following questions. Answers below are numbered in the same sequence as the questions.

1. Should the federal government's long-range farm policy provide for (a) high, rigid price supports; (b) flexible price supports or (c) no price supports?
2. Should United States policy in Southeast Asia call for (a) an alliance of free Southeast Asia nations with free-world backing; (b) setting up a geographic line in Southeast Asia and attacking Communist-led forces if they cross it; (c) recognition of Red China; (d) admission of Red China to the United Nations security council or general assembly; (e) all-out support of Nationalist China?
3. Do you favor changes in the U.N. charter? If so, what changes?
4. Is it in the interest of the United States to protect non-Communist countries against Communist domination? Is use of American troops abroad, to stop Communist military aggression, justified? What measures would you favor to stop Communist political expansion?
5. Do you feel that our domestic loyalty and security program is working well or not?
6. Do you favor continuation of foreign military aid? Foreign economic aid?

member nation. We don't need old barbarian tyranny to crack the heads of nations to get them to co-operate.

4. It is in the interest of the United States to help countries periled by Communist threats, but we should know that they are ready to help themselves. We threw three billion dollars worth of goods in the lap of our enemy in Indo-China. The use of American troops abroad to stop Communist aggression should only come as a last resort. I think the right relations with other countries will protect us. The trouble is the com-

tricked us and made enemies for us through their influence over the relations of our country with other countries, especially the propaganda agencies like the Voice of America.

5. Only fair. We need more co-operation on the part of the executive branch with congressional investigating committees.

6. Foreign military aid should be discontinued as soon as possible. Foreign economic aid should be discontinued as soon as possible. Foreign economic aid should be put on a self-supporting basis through guaranteed long-time loans.

3 GOP and 6 DFL Candidates Compete for Burnquist Post

Because J. A. A. Burnquist, veteran Minnesota attorney general, is stepping out of public office at the end of this year, the field of candidates who aspire to his job is larger than normal.

Three Republicans and six Democrat - Farmer - Laborites seek party nominations in the Sept. 14 primary election. One of each will go on to compete in the general election Nov. 2.

The Minneapolis Tribune asked the candidates for information about themselves and their activities.

Republican

ELMER R. ANDERSON, 53, 4324 Lyndale avenue S., lawyer and trade association counselor. Married, two children. Graduate University of Nebraska and Minneapolis - Minnesota College of Law. Continuation law courses University of Minnesota.



Minneapolis - Minnesota charter commission 14 E. Anderson years, director Aquatennial association, member Hennepin

Duties of Attorney General

The attorney general represents the state in all civil actions and in criminal cases before the Minnesota supreme court.

His office is powerful because of the great numbers of legal opinions it writes to interpret state law for the legislature and for state and local governments.

The attorney general, elected for a two-year term, is paid \$13,000 a year. He has a large staff of assistants.

county and state bar associations. Also, Charter member Aqua Jesters, Chamber of Commerce, speakers bureau Community Chest and Hennepin County Tuberculosis association, and member American Judicature society, A. F. & A. M., Scottish Rite, American Legion. Served three years naval intelligence World War II. Candidate for lieutenant governor two years ago.

FORREST T. ANDERSON, 40, Grand Rapids, Minn., private law practice. Married, three children. Graduate University of Minnesota and St. Paul College of Law. Served marines World War II. Member American Legion, Veterans of Foreign Wars and Itasca F. Anderson County Bar association.



BERNHARD LEVANDER, 38, 3550 Siems court, St. Paul, general law practice. Married, two children. Formerly visiting lecturer in speech, Macalester college. Served in navy World War II. Was public service research secretary for Gov. Harold Stassen, state director of social welfare



LeVander and state chairman Republican party.

Member National Conference of Christians and Jews, and boards of Bethesda hospital, Bethesda Invalid home, American Swedish institute, Minnesota Citizens Mental Health association and United Nations association.

Member state tuberculosis study commission and Ameri-

can Legion. Reorganized social welfare division and lobbied for GOP platforms in legislative sessions.

DFL

CHESTER G. W. GUSTAFSON, 43, Bricelyn, Minn., attorney. Married, two children. Member A.F. & A.M., Scottish Rite, Shrine, Eagles and American Bar association.



MILES LORD, 34, 5528 Elliot avenue, attorney. Married, four children. Served in air corps in World War II. Graduate University of Minnesota law school. Former assistant United States district attorney. Member Jaycees, American Legion, county and State Bar associations, National Congress of Parents and Teachers, chairman of liquor licensing committee Citizens League of Greater Minneapolis, treasurer Fifth District DFL club, candidate for state legislature 1950. Was Golden Glove boxer, worked nights



to support family while finishing law school, prosecuted many tax cases as assistant district attorney and directed investigation of abuses in Minnesota penal institutions. Endorsed by DFL convention.

FRANK PATRICK RYAN, 55, 3754 Sixteenth avenue S., Minneapolis, general practice of law. Married, two children. Attended St. Thomas college and St. Paul and Minnesota colleges of law. Assistant United States attorney for department of

Justices Face No Primary Opposition



Johnson



Dell



Nelson



Gallagher



Knutson



Melin

There will be no primary election contest Sept. 14 for four Minnesota supreme court vacancies — one chief justice and three associate justices.

All four will appear on the Nov. 2 general election ballot, even though two of the associates — Thomas Gallagher and Martin A. Nelson — will be re-elected without opposition.

Chief Justice Roger L. Dell will be opposed Nov. 2 by E. Luther Melin, Minneapolis. Associate Justice Oscar R. Knutson will be opposed by Allan L. Johnson, Wayzata.

labor, former state assistant attorney general and teacher of real estate law at Minneapolis Business college. Served army world War I. Member American Legion, Elks, Moose, Hennepin and Ramsey and Minnesota bar associations and Delta Theta Phi, legal fraternity.

ERLING SWENSON, 64, 2722 Vincent avenue N., Minneapolis, practiced law 40 years. Married, two children. Graduate University of Minnesota law school. Former state representative and state senator, director of state game and fish division during Floyd Olson administration. Member county and state bar associations and of Izaak Walton League. Sponsored conservation bills.

ROBERT W. GARRITY and A. M. JOYCE, DFL candidates for attorney general, did not reply to the Tribune's request for information.

RAIL

Cand road a sion us zens v Irish n excepti

So it nesotar ligently candida they s about queried

Then the san tions in low.

THO

33, 825 Paul, real 75, Chemio operator and M ried, fi force V Casino's

1. No 2. Re act. 3. Ele

CHAI

Su Ro

Six c eratic-F three R the two clerk o Sept. 14

The asked about t tivities.

ERIC

5607 Ca

Ahlst Manage lodge a Park Re didate gressma

GRAC 67, 3241 neapolis supreme clerk. ly work er's lav O rtor Minn.,

on Orto depende ber Or the E Star, A Legion iary, & Pro Women's

Sup Cler

The is cust ments. ed to a tains t state's ord of court brief utes of

eme Court Clerk Draws 6 Entries

Court Duties

3. Appointed by governor,
one-man commission, four-year
term.

Sheriff Race Draws 4 Candidates

Four candidates for Hennepin county sheriff will compete in the Sept. 14 primary election for two places on the Nov. 2 general election ballot.

The Citizens League of Greater Minneapolis asked the candidates for biographical information and for their stands on three issues. Their answers, numbered in the same sequence as the questions in the box on this page, follow:

JENS CHRISTENSEN, 59, 3136 Oakland avenue, Minneapolis. Married, five children. Serving second term as county commissioner. Sixteen years executive secretary and business manager, Twin City Garage association. Formerly Minneapolis alderman eight years. Member Minnesota Council of Retail Trade associations, Minnesota Trade Association Managers council, PTA, Minnesota Speed Skating association, Powderhorn Speed Skating club, South Side Picnic association, Lions, Greater Minneapolis Safety council, Citizens League. Republican.



1. Proven integrity and administrative ability; courage to deal impartially with all people; ability to maintain law enforcement and an administrative staff as a team, able and willing to function efficiently, with best possible public relations.

2. See answer to No. 3.

3. A preponderance of the duties and activities of the sheriff's office are civil in nature and responsibility. I believe these duties and activities have been sadly neglected, and it will be my earnest endeavor to improve this service to the public.

To illustrate: Over half a million dollars in personal property taxes, collection of which devolves upon the sheriff's personnel, have gone uncollected. This means that people who paid their taxes have had to make up this deficit.

As to police work, I believe the present staff is far below maximum efficiency and could be so organized, without any personnel increase, to provide better night policing in suburban Hennepin county.

Further, I recognize a sharp cleavage between the sheriff's personnel and local police officers, and I would work to the best of my ability and experience to achieve the highest degree of co-operation among these various arms.

FRANK J. DUNLEAVY, 47, 2404 Clinton avenue, Minneapolis. Married, one child. Private detective, Frank J. Dunleavy Detective bureau. Minneapolis police department six years. Member Knights of Columbus. Nonpartisan.



1. Former member of the Minneapolis police department and personal aid to Mayor Kline 1941 to 1945. Sole owner of Frank J. Dunleavy Detective bureau since 1946; a total of 25 years over-all investigation experience.

2. The first and foremost obligation of the sheriff is to preserve the peace and enforce the laws of the county. He must have committed to jail any violators of that peace. Additionally, he is responsible for the collection of personal property taxes. He has the sole responsibility for the performance and

integrity of his staff.

3. Streamline and strengthen the entire sheriff's staff. Assign a morals and vice squad to keep a closer check on sales of intoxicating liquor to minors and infractions of liquor laws. The present system of using just a tavern inspector has been proven inadequate. Greater emphasis should be put on the strict enforcement of traffic laws.

M. J. GILFILLAN, 50, route 1, Hopkins. Married, three children. Motion picture operator. Formerly railway policeman. Member American Brotherhood of Railway Police, I. S. T. S. E. M. M. P. M., operators local 219, Central Police association. Independent.



1. Twenty years railroad experience, 14 years with special agents, railroad police department, investigator, worked on all types of violations, co-operated with all law enforcement branches, state, local and federal agencies. Attended police schools of different law enforcement groups.

2. To enforce all laws, according to statutes of law, to work in harmony with all other law

enforcement officers, carry out the directions of the court.

3. Strict traffic enforcement, more protection in suburban areas and better public relations. More harmony needed among personnel.

ED RYAN, 57, 820 SE. Sixth street, Minneapolis. Married, two children. Sheriff since 1947. Graduate University of Minnesota, FBI academy. Formerly chief of police, Minneapolis. Served army two years. Member Kiwanis, Minneapolis Business forum, American Legion, Veterans of Foreign Wars, Sertoma club, Moose, Citizens league, International Geneva Associates, Viking club, Aquatennial.



General chairman juvenile detention committee. Proposed teletype network linking Hennepin county sheriff's office and radio with Minneapolis police department, Minnesota state crime bureau, Minnesota highway patrol. Director of civil defense Hennepin county. State chairman, anti-subversive committee American Legion.

1. I became a member of the park police department in 1925; transferred to the regular city

Sheriff's Duties

The sheriff is required to enforce laws, preserve peace, arrest law violators, serve legal papers, attend district courts and carry out court orders. He also collects delinquent personal property taxes and works closely with juvenile court, probation office, school and churches to curb juvenile delinquency.

The sheriff is elected for four years. His annual salary is \$8,500.

department in 1927; worked in the uniform division until 1932, when I became a detective. In 1940 I organized and headed the international security division of Minneapolis police department.

I was elected sheriff in 1946 and was re-elected in 1950. In 1942, I graduated from the FBI Police academy in Washington, after 14 weeks of concentrated training.

2. The sheriff is the chief law enforcement officer of the county. He is in immediate charge of and responsible for the county jail, collection of delinquent personal property taxes, summoning of grand and petit jurors, service of legal documents in the county, control of traffic, investigation of crimes, enforcement of state liquor laws, policing and carrying out orders of the district court, maintenance of a radio station, conveyance of prisoners and mental patients to the various institutions and numerous other activities.

3. Coping with a serious traffic and crime situation with insufficient manpower. The ever-increasing population in Hennepin county means increasing work for this office in all divisions. Give us the manpower and the tools and we will do the job.

Questions Answered by Sheriff Candidates

1. What training and experience have you had that you believe qualifies you for the office of Hennepin county sheriff?
2. What do you understand to be the broad functions of the office of Hennepin county sheriff?
3. What do you consider the most significant problem or problems now confronting the office? What solutions would you suggest?

Coroner Race Features Three-Way Contest

Two of the three candidates for nomination as Hennepin county coroner in the Sept. 14 primary election will go on to compete in the general election Nov. 2.

The incumbent, Dr. Reinald G. Johnson, is not seeking re-election.

The Citizens League of Greater Minneapolis asked the candidates for biographical information and for their stands on three issues. Their answers, numbered in the same sequence as the questions in the box on this page, follow:

W. G. BERG, 67, 4600 Stevens avenue, Minneapolis. Single. Chiropractor, general practice. Three years in army hospital corps. Member A.F. & A.M., Veterans of Foreign Wars. Republican.



1. Thirty-five years of practice. Special work at University of Minnesota. Postgraduate work Metropolitan college, Cleveland, Ohio.

2. To see the cause of death is properly diagnosed. Find nearest relative. Criminal investigations.

3. That a law be passed to have all autopsies done by pathological department of University of Minnesota and all deputies holders of basic service certificate. Morgue keeper under civil service.

RUTHERFORD F. BURR, 63, 3040 Lyndale avenue S., Minneapolis. Married, three children. Embalmer, owner funeral home. Member Masons, O.E.S., Lyndale-Lake association, Hennepin-Lake association. No political party affiliation.

1. Embalmer. Funeral director 40 years. Know county very well. Know all funeral laws, burial laws very well. Graduate of Johnson College of Anatomy, Sanitation. Taught anatomy. Licensed in Minnesota and had license in North Dakota. Worked with Doctors McCarthy, Bell and Robertson of University of Minnesota.

2. Investigate death of mystery and protect properties.

3. The office of coroner in Hennepin county is very well



"Didn't you forget to bring something with you?"

—Lewis in Milwaukee Journal

Questions Answered by Coroner Candidates

1. What training and experience have you had that you believe qualifies you for the office of Hennepin county coroner?
2. What do you understand to be the broad functions of the office of Hennepin county coroner?
3. What do you consider the most significant problem or problems now confronting the office? What solutions would you suggest?

taken care of. Service calls should be more prompt. I hear this complaint often.

WILLIAM GUY GUTHRIE, 69, 820 SE. Essex street, Minneapolis. Retired. Married, no children. M. D. and B.A. degrees. Formerly medical officer, United States army, 32 years. Member American Medical association, fellow American College of Surgeons, Association Military Surgeons, Izaak Walton League, American Legion, Masonic bodies. Republican.



1. Thirty-two years active service in the medical corps, United States army. Extensive experience on boards investigating and determining cause of death. Extensive experience in matters of administration as well as active professional service in station and general

hospitals, and in charge of hospitals.

2. To determine cause of death accurately and circumstances under which death occurs in all cases referred to this office.

3. I do not believe that at this time any serious problem confronts this office. I believe the present coroner, Dr. Reinald G. Johnson, is doing a good job.

Coroner's Duties

The coroner investigates all deaths in the county which appear to be homicides, suicides, accidental or mysterious. He may summon a coroner's jury to hear evidence in cases of violent death.

The coroner, elected for a four-year term, takes over the sheriff's duties if the latter is suspended or his office becomes vacant before his regular term expires. Annual salary of the coroner is \$6,500.

Some Officials Face No Contests

Several Hennepin county officials will be re-elected in 1954 without primary contests Sept. 14 and without general election opposition Nov. 2.

Candidates for three other officers will be nominated without opposition; their names will appear only on the final ballot. The three posts are county treasurer, for which incumbent George Totten, Jr., will engage Clarence S. Palmer Nov. 2; county commissioner from the fourth district and county superintendent of schools, Kenneth McCabe will challenge incumbent Commissioner I. G. Scott in the county board race.

Mrs. Viola Thompson, Glen Lake, assistant superintendent of schools, and Iner J. Johnson, 1605 Louisiana avenue, St. Louis Park, seek the superintendent job.

Unopposed for re-election are the following incumbents (their names will not appear on the primary ballot):

District court Judges D. E. LaBelle, Paul S. Carroll, Earl J. Lyons and Thomas Tallakson. Tallakson has the juvenile court assignment.

Frank D. Bessenes, court commissioner.

George W. Matthews, county commissioner, second district. Michael J. Dillon, county attorney.

Robert F. Fitzsimmons, auditor.

Philip C. Schmidt, clerk of district court.

Donald C. Bennyhoff, register of deeds.

Howard W. Perkins, surveyor.

Views of Twin Cities Congress Candidates

By JOHN C. McDONALD

Minneapolis Tribune Staff Writer

Nineteen Democratic-Farmer-Laborites and 14 Republicans are seeking their parties' nominations to nine congressional seats in the Sept. 14 primary election.

There is only one GOP candidate in five of the districts—the first, second, fifth, sixth and eighth. There will be primary contests only in the other four districts, although names of all will appear on the primary ballot. DFL candidates are unopposed in four districts—the first, third, sixth and eighth.

One district candidate from each party will go on to seek final voter approval in the general election Nov. 2.

The Tribune asked the candidates to give their views on six major issues. Their answers, which follow, are numbered to correspond with the numbers in the question box at the top of the page.

Six Republicans and five DFLers seek nomination in the third, fourth and fifth (Twin Cities area) districts.

Third District

DFL

ROY W. WIER, 66, 2214 Central avenue, Minneapolis. Congressman since 1949, member house education and labor committee. Single. Formerly financial secretary and organizer Minneapolis Central Labor union. State representative six years, Minneapolis board of education nine years. **Wier** Member Veterans of Foreign Wars, Eagles, Stage Employees union.

Wier did not return the questionnaire. He was traveling on the west coast and could not be reached.

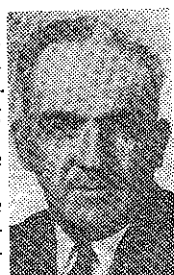
REPUBLICAN

DAVID S. BLEDSOE, 50, route 1, Osseo, Minn., inspector of machine parts. Married, four children. Member PTA, Champlin township. Improvement association and zoning commission.

1. Flexible price supports.
2. An alliance of free southeast Asia nations with free-world backing.
3. None.
4. Yes, it is in interest of



Wier



Bledsoe

Duties of Congressmen

Congress writes the laws of the land. Minnesota elects nine members, one from each of nine congressional districts, to the house of representatives, which has a total membership of 435.

Representatives are paid \$12,500 a year, plus \$2,500 tax-free expense money. They are elected for two-year terms.

Questions Asked Candidates for Seats in Congress

The Minneapolis Tribune asked each candidate for congress the following questions. Answers below are numbered in the same sequence as the questions.

1. Should the federal government's long-range farm policy provide for (a) high, rigid price supports; (b) flexible price supports, or (c) no price supports?
2. Should United States policy in Southeast Asia call for (a) an alliance of free Southeast Asia nations with free-world backing; (b) setting up a geographic line in Southeast Asia and attacking Communist-led forces if they cross it; (c) recognition of Red China; (d) admission of Red China to the United Nations security council or general assembly; (e) all-out support of Nationalist China?
3. Do you favor changes in the U.N. charter? If so, what changes?
4. Is it in the interest of the United States to protect non-Communist countries against Communist domination? Is use of American troops abroad, to stop Communist military aggression, justified? What measures would you favor to stop Communist political expansion?
5. Do you feel that our domestic loyalty and security program is working well, or not?
6. Do you favor continuation of foreign military aid? Foreign economic aid?

the United States to protect non-Communist countries against Communist aggression. Use of American troops abroad to stop that aggression is justified in some cases. I believe foreign economic aid should be administered with the idea, "What does it mean to the free world?" rather than "What does it mean to us?"

5. No. Too much politics.
6. Yes, both.

PETER FILIPS, 51, 2511 NE. Jackson street, Minneapolis, draftsman Crown Iron Works.

Single. Operates own business, Modern Greenhouse Manufacturing Co., in spare time. Served army five months.

1. Of the bills proposed, I favor (b). However, I do believe farmers can be educated so as to take care of themselves. This would involve salesmanship and administration of their own affairs, by their own groups.

2. (a) If Southeast Asia requests it, yes. (b) This is dynamic. Speak softly but carry a big stick. (c) No. (d) No. (e) I am disappointed with the results of the help we have given Nationalist China in the past. I believe in giving support only to the extent of the results of this support. Lots of support if we get good results.

3. We cannot expect only a few members to carry the entire load. Lots of responsibilities exist, and we need teamwork to succeed.

4. If we had sent statesmen to Washington instead of politicians, we wouldn't be in the mess we are in now. Russia has bested us in all political ventures during the Democratic administration. We're in pretty deep now, and we really have a problem on our hands.

5. A big improvement over the past, but lots to be done yet. Putting a statesman in Washington to replace the politician will have its effects in the near future.

6. The results of our efforts have been too poor. Unless we get better results from our efforts, cut down the aid. God helps those who try to help themselves.

ED WILLOW, 49, 2730 NE. McKinley street, on leave from

YMCA post (executive secretary, Washburn branch) to run for congress. Married, four children. Graduate Macalester college, post-graduate work University of Minnesota. Formerly secretary Downtown YMCA and Northeast Willow



Filips

branch. Member Rotary, Lions, United Nations association, Foreign Policy association, Citizens league, Edison PTA, Chamber of Commerce, survey committee studying secondary education in Minneapolis. GOP nominee third district 1952.

1. Farmers are like all other freedom-loving Americans; they do not want to be dependent on government. Unfortunately, many blunders of the past 20 years have placed the farmer in the uncomfortable position where he has lost much of his freedom through regimentation and control.

Farmers do not want to be controlled, but they do need the protection of price supports. Any reduction in support levels that decreases the purchasing power of the farmer also hurts his neighbor. For this reason we must fight to avoid a sudden reduction of price supports. Farmers in the third congressional district are a vital part of our total economic picture, and therefore not only need protection but help in other areas. Farmers should be offered assistance in new soil conservation methods, and agricultural research should expand to uncover new farm products.

2. In order to prevent the further advance of Communists, America must take the lead in helping free southeast Asia countries to forge defensive alliances. It is through this method that the threat of Red China can be counteracted, and that economic life lines can be maintained.

In forging the free world chain of defense, it is sometimes difficult to distinguish between Communist agitation and honest attempts of countries to liberate themselves from colonialism. This confusion makes it difficult to open fire on invading forces automatically. Therefore, a set rule cannot be defined prior to examination of whatever problems may arise.

Under no condition can we afford to admit Communist

China to the United Nations. It would be disastrous to the confidence other free Asian countries have in the United States if we give in to the Reds. It would also amount to desertion of Nationalist China forces on Formosa. To give a helping hand to the very nation that killed and tortured American soldiers requires a conveniently short memory.

3. We often fail to realize the magnificent job that is being done by the United Nations, because the news stories that are publicized are concerned primarily with conflict and disagreement among members. Nevertheless, much good is quietly going on, through exchange of experience and information among friendly countries. This form of co-operation is necessary to promote international peace.

Apparently the prime difficulty of the United Nations is that it needs strengthening. It is one of the most important instruments that we have to build a peaceful world. The U.N. must have the strength with which to enforce its decisions.

The problem is to create this strength, yet to guarantee the rights of individual member nations. I am not in favor of granting the United Nations power which could supersede the Constitution of the United States.

4. Under Democrat leadership, the United States allowed such a tremendous amount of the world to fall under the heel of Communist dictators that we cannot afford any more aggression. The scale is too delicately balanced now to permit further losses to the Reds. We must prevent aggression by keeping our allies strong, by exchange of information and by bolstering of material and economic aid.

If our allies are strong, the necessity of having our soldiers fight on foreign soil will diminish. But we must always be prepared to fight for the cause of freedom-loving people at any place in the world. If we admit

that we are unwilling to fight for our friends, then we are simply asking for further Communist aggression.

The United States is necessarily the leader among free nations and we must face up to our responsibilities, even though sacrifices are involved. By showing the Communist world that we mean business, active, open war will not be likely.

At the same time we cannot lose an economic war with the Communists. This means it is necessary to hamper Red economy by limiting trade which helps communism build up its war machine at the same time we build up trade among friendly nations. Information must be sent to free countries and also to people behind the Iron Curtain publicizing the benefits of the free enterprise system, and assuring them of the peaceful intent of the United States.

I will not vote for the entry of our troops in any war which involves the support of a colonial empire.

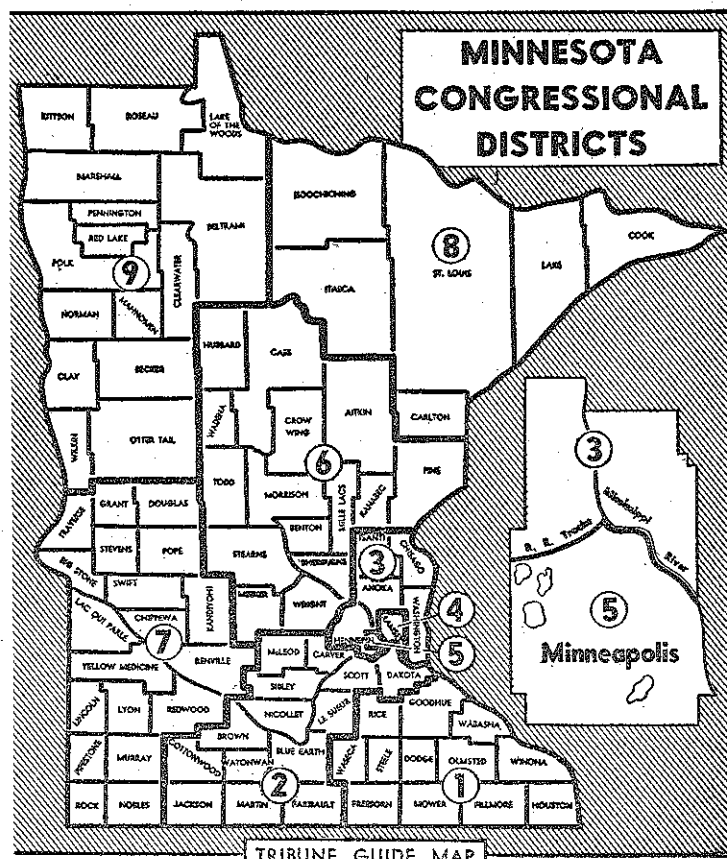
5. The Republican party has done well in awaking the nation to the growing danger of communism. Furthermore, the Eisenhower administration has rooted out many subversives and loyalty risks, resulting in a tightening of government security and efficiency. With this change of attitude, government employees are contributing more work at less expense to taxpayers.

We must be constantly vigilant to defend ourselves against subversion. Continual investigation by the FBI, the attorney general's office and vigilance by house and senate committees will keep Communists on the run. Known Communists should be dealt with harshly.

6. It is to the benefit of the United States to have strong allies and in many cases this means our support, both militarily and economically. The huge war machine that Russia

Candidates

Continued on Page Two



TRIBUNE GUIDE MAP

Minneapolis Morning Tribune

PART 2

Voter's Guide

Prepared with the assistance of the
Citizens League of Greater Minneapolis

Minneapolis, Minn., Thursday, September 9, 1954

Candidates

Continued from Page One

and her satellites have been building up cannot be matched manpowerwise by United States troops alone. We simply don't have enough men. By aiding our allies to build up armies which, in many cases, can be equipped with American weapons, a balance can be maintained.

When we help our allies to have strong, sound economies, we help them resist the encroachment of communism. We cannot afford to be stingy with our future. At the same time we must be careful that we encourage our allies to improve themselves, not to rely on United States aid. Peace cannot be purchased — it takes hard work.

Fourth District

DFL

JIM INGRAM, 36, 984 Seminary avenue, St. Paul. Former small businessman. Graduate engineer, University of Nebraska. Married, one child. Army World War II. Member American Legion, American Society of Military Engineers, Midway Civic club, Anoka Flying club, Rod and Gun club. Supported Midway improvement.



Ingram

- (b).
- (a).
- Due to rapid changes, it is not possible to reply at this time.
- Yes, it is in United States interest. Use of American troops justified in some cases. Measure favored to stop Communist political expansion: that an outline reply be made from a point of justifying our action as a democracy.
- Yes. In most instances appropriate action is taken. I am not in favor of Sen. McCarthy's actions.
- Favor continuation of military aid to a degree commensurate with that of the nation receiving the aid. Favor economic aid to the point of aiding those in need without allowing them to become dependent upon us as a source of food at all times.

EUGENE J. McCARTHY, 38, 1946 Selby avenue, St. Paul, congressman three terms. Married, three children. Served military intelligence. Member Eagles, Knights of Columbus. House member of postoffice and civil service committees. Served on agricultural committee; interior and insular affairs committee, which has jurisdiction over mines and minerals, island and territorial possessions, reclamation and irrigation of public lands and Indian affairs. Also served on banking and currency committee.



McCarthy

- I supported action to provide 90 per cent on basic commodities, accompanied by provisions for acreage allotments and marketing quotas and flexible price supports on other agricultural commodities.
- Certainly the United States should seek to set up an alliance of free southeast Asia nations with free-world backing. It should seek also to establish the territorial integrity of non-Communist countries of southeast Asia and should try to strengthen these countries so that they will be able to protect their territory, even if this

would involve some military support.

I would not favor either recognizing Red China or the admission of Red China into the U.N. In regard to your point about the all-out support of Nationalist China, I would need further definition of terms before giving a definite answer. Certainly I would not be in favor of the United States consenting to do whatever Chiang-Kai-shek might request or direct.

3. I believe the conference for the revision of the U.N. charter should be held. Whereas I do not favor the elimination of the veto power, I believe the new charter should seek to define the conditions under which it could be used.

4. It is to the interest of the United States to protect non-Communist countries against Communist combination, even to the point of using American troops under certain conditions. This applies especially to European area. I believe that we should continue our program of economic and military aid and that the Point Four program should be expanded, as well as our information services.

5. In order to answer this question, one must rely on the reports of administrative agencies. In recent debates in the house, we have been assured by administration leaders that the program is working well.

I supported the recent congressional action to outlaw the Communist party. It seems clear enough that the Communist party gives lip service to freedom, only to exploit and abuse it.

It seems clear enough that the Communist party is different not only in degree, but in its essential qualities, from other extreme political movements which either exist today in America or have existed in the past.

An argument against the bill is that which has been made by the Justice Department to the effect that this legislation would force the Communist party to go underground. It seems reasonable to me to conclude that the Communist party would long ago have gone underground if such action were advantageous to the party.

If this law forces the party to adopt that course of action, it will have the effect of bringing the party to take an action which it has not freely taken in the past, and which, I think we can safely assume, will not be advantageous to the party.

REPUBLICAN

JOHN M. DREXLER, 49, 75 Cleveland avenue S., St. Paul, retired. Married, four children. Minnesota legislature six years. Supported labor relations act, reorganization act and repeal of monies and credits tax.



Drexler

- No price supports, but our farm economy should be bolstered when needed by purchases of the government of crops that are long in abundance to be used in lend lease.
- I favor a hands-off policy in all Asiatic political troubles.
- No answer.
- I believe in stricter enforcement of the Monroe doctrine. I am opposed to the use of American troops abroad. A religious educational program would stop Communist political expansion.
- No answer.
- I favor foreign economic aid with a keen appreciation of its effect on our economy and tax structure.

Questions Asked Candidates for Seats in Congress

The Minneapolis Tribune asked each candidate for congress the following questions. Answers below are numbered in the same sequence as the questions.

- Should the federal government's long-range farm policy provide for (a) high, rigid price supports; (b) flexible price supports, or (c) no price supports?
- Should United States policy in Southeast Asia call for (a) an alliance of free Southeast Asia nations with free-world backing; (b) setting up a geographic line in Southeast Asia and attacking Communist-led forces if they cross it; (c) recognition of Red China; (d) admission of Red China to the United Nations security council or general assembly; (e) all-out support of Nationalist China?
- Do you favor changes in the U.N. charter? If so, what changes?
- Is it in the interest of the United States to protect non-Communist countries against Communist domination? Is use of American troops abroad, to stop Communist military aggression, justified? What measures would you favor to stop Communist political expansion?
- Do you feel that our domestic loyalty and security program is working well, or not?
- Do you favor continuation of foreign military aid? Foreign economic aid?

RICHARD C. (DICK) HANSEN, 44, 1645 Eleanor avenue, St. Paul, real-estate sales coordinator. Married, two children. College graduate. Formerly executive secretary to Gov. Youngdahl, secretary to Rep. Devitt. Navy three years World War II. Member Downtown YMCA Men's club, A. F. & A. M., American Legion, St. Paul Board of Realtors.



Hansen

- Flexible price supports.
- An alliance of free southeast Asia nations with free-world backing.
- No.
- Yes, only with consent of congress. Military aid, economic aid to small free countries. Use of Voice of America, foreign exchange student program (to stop Communist expansion).
- Fairly well, recent laws of 83rd congress should bring improvement to security program.
- Yes. Yes, which requires reauthorization from year to year by the congress.

Fifth District

DFL

GEORGE W. MacDONALD, 42, 3832 Twenty-ninth avenue S., Minneapolis, business agent local 1146 UE (at Minneapolis-Moline Co.). Married, three children. Army World War II. Served war manpower board and Red Cross. Worked for defeat of city payroll tax and state sales tax, for repeal Taft-Hartley law, lobbied Washington for a "New Deal-Roosevelt" program.



MacDonald

- I favor high, rigid price supports to benefit both farmers and city people. A recent report by the house agriculture committee said: "Thus far, almost none of the lower prices received by farmers since 1951 has been passed on to consumers in the form of lower retail food costs... Consumers can expect little benefit from lower farm prices unless recent tendencies to increase marketing and processing charges are curbed."
- The only way to guarantee lower prices for consumers and higher income for farmers is to eliminate the profiteering by the big "middleman" combines which get the greatest share of the consumer dollar. The sharp drop in farm income is a direct result of the government's policy of flexible

price supports which has failed to lower prices for city consumers and also has caused serious unemployment, especially in farm equipment plants such as Minneapolis-Moline Co. High price supports for farmers mean jobs for Minneapolis workers and more prosperity.

2. A southeast Asia military alliance would be a direct repudiation of the United Nations. India and other Asian nations have refused to participate in such a military alliance since they believe it will lead to war rather than peace.

I agree with Prime Minister Nehru of India that we either have "coexistence" with other nations or "co-destruction."

We should follow our British and French allies and recognize the new Chinese government and agree to its eventual admission to the United Nations. Recognition does not imply approval of the Chinese government's policies, but is simply an indication that we want friendly relations with the Chinese people, who have always been cordial.

Our government's support of the corrupt Chiang Kai-shek dictatorship has cost us billions, isolated us from the Chinese people and from our allies, caused constant war dangers and spread fear and distrust among normally friendly colonial nations, such as India, Indonesia and Burma. Had the new Chinese government been admitted to the U.N. after the Chinese civil war, we may have avoided the war in Korea.

3. I believe the U.N. charter can be improved but the U.N. can only work effectively if the major powers talk out their differences across the conference table rather than resorting to war and threats of war.

The U.N. must not be used by any one nation or group of nations against other nations as Gen. MacArthur did in attempting to bring our country into all-out war with China.

The U.N. was established to preserve peace and promote economic welfare. When a more friendly world atmosphere has been achieved, changes should be made in the U.N. charter to make the U.N. a more perfect world organization.

4. I am opposed to our government, or any other government, interfering in the affairs of other nations.

I am opposed to the use of American troops abroad to stop so-called "aggression" — too often, our government looks upon the desires of colonial peoples for freedom and independence as "communism."

To establish lasting peace and international security, we should change our policy from one of "massive retaliation," which brought us to the brink of war in Indochina, to one of

continuous negotiations to settle all differences on a "live-and-let-live" basis as recommended by Franklin Delano Roosevelt.

This would lead to gradual disarmament, including an international agreement to ban the use of atom and hydrogen bombs, as well as expanded foreign trade among all nations. As Roosevelt believed, wars are no solution for our problems.

Ideas cannot be beaten by bombs nor can they be legislated out of existence. The only answer to one idea is with a better idea. The United States should compete with the Soviet Union or any other country to see which nation can provide the most homes, the best health and education program, the most democracy and better life for its people.

5. I am opposed to our present domestic loyalty and security program. It has caused a breakdown in morale of federal workers and lost our government the services of valuable, loyal persons.

It has destroyed the lives and reputations of countless individuals, innocent of any crime. Dr. Robert Oppenheimer, famed atomic scientist, was cast aside in the name of security.

This program has led to spread of McCarthyism, creating fear, destroying established American liberties and making a mockery of our democracy in the eyes of the world. The best security for America is more democracy, not less.

Our system of democratic government is perhaps the finest on earth and if we chip away at our basic liberties we will destroy man's finest hopes for a world of peace, brotherhood and plenty for all.

6. I am opposed to the present vast spending for military aid. Such military aid promotes war tensions and weakens the U.N. as a peace agency. It creates high cost of living, helps destroy traditional American liberties and puts our economy on a war basis which can only lead to eventual depression.

In the age of atom and hydrogen bombs, which can snuff out whole cities and populations at a time, the best defense for America is peace.

I favor a sharp cut in military spending to provide money for building needed homes, schools, hospitals, road, dams, which will create more employment; to increase old age, unemployment compensation and veterans' benefits; and to base our economy on peacetime needs rather than on war.

I favor economic aid, especially to underdeveloped nations, to provide more food, schools, homes, hospitals and the development of basic, peacetime industries; this aid to be given without strings, except for safeguards against corruption.

ANDERS THOMPSON, 59, 3441 Forty-fifth avenue S., member Minneapolis school board. Served army 14 months. Married, one child. Attended Gustavus Adolphus college, graduated Minnesota College of Law. Formerly with internal revenue bureau, now



AFL representative on Community Chest (on leave). Member American Legion, DAV, Masonic bodies, Elks, PTA, National Association of Internal Revenue Employees, Citizens Committee on Public Education, AFL American Federation of Government Employees.

Member board of estimate and taxation, Minnesota PTA congress, Minnesota Society for Crippled Children and Adults, mayor's committee for employment of handicapped. Formerly active Boy Scouts and YMCA,

three years president Minneapolis Council of Parents and Teachers. Endorsed by Fifth District DFL.

1. Flexible price supports.
2. (a) Yes. (b) There should be an understanding of the free world with the Red nations, but we alone must not set a line for attack. (c) Not now. Must be considered if Red China is recognized by the United Nations. (d) The United States must consider the wishes of the United Nations security council and general assembly if peace can be maintained. The door should not be closed if the climate of international thinking is favorable. (e) No.
3. (1) Yes. Elimination of veto on peaceful settlement of disputes. (2) Elimination of veto in council on admission of new members.
4. (1) Yes, under certain circumstances. (2) Could be as it was in Korea. These two answers depend on the decision of the United Nations. (3) [To stop Communist expansion.] Primarily: (a) Point Four. (b) Technical aid through United Nations. (c) Accelerated exchange program of students, teachers, businessmen, labor leaders and others.
5. Yes, but it is affected adversely through certain congressional committees using undemocratic procedures.
6. (a) Yes, but each program must be studied carefully. (b) In certain cases, but I favor greatly expanded Point Four and the United Nations technical aid.

REPUBLICAN

WALTER H. JUDD, 55, 1014 Third avenue S., congressman 12 years. Married, three children. Formerly physician and missionary. Army World War I. Member Hennepin County Medical society, Masons, Foreign Policy association, American Legion, Aquatennial, Athletic club.



Sponsored full employment act of 1946, surplus property disposal act, government reorganization act, government corporation control act, military unification bill, aid to Greece and Turkey act, Marshall plan act, Voice of America act, student exchange act, technical assistance act, mutual security act 1951-54, world health organization act, American Indian public health act, reciprocal trade agreements act, agricultural trade development and assistance act.

1. Flexible.
2. (a) I introduced a bill calling for Pacific pact in 1949 and it was included in mutual defense assistance act of 1949. I am still working for it. (b) No, not the way to do it. (c) No, unless we want to see Asia quickly become Communist. (d) No, unless we want to destroy the United Nations and make a mockery of its charter. (e) Yes, in same way we support England, France, Italy, Greece, Korea, etc. Only alternative is support of Chinese Communists in effect.
3. Yes. Have led in advocating them since 1947. (1) Eliminate veto except in cases of aggression, breaches or threats to peace. (2) Voting formula so voting power of a nation roughly corresponds to actual power. (3) Police force made up of forces from smaller nations—strong enough to protect victims of aggression, but not strong enough to enforce its will on law abiding countries. 1 and 3 obtainable only after 2.
4. (a) Yes, indeed. (b) Yes, under circumstances that make such action morally defensible and feasible, (i.e.) in defense of freedom. Must be to help peoples retain their independence, at request of such peo-

Legislative Races Draw Big Field

By JOHN C. McDONALD
Minneapolis Tribune Staff Writer

Don't let anyone tell you there's no candidate interest in the Minnesota state legislature which is to meet in January 1955 for its biennial 90 days.

Sixty residents of Hennepin county are vying this year for the county's 18 seats (two in each of nine districts) in the house of representatives. Of these, 13 will be nominated without contest in the 29th, 30th, 32nd and 35th districts. Their names will not appear on the Sept. 14 primary election ballot. All face opposition in the Nov. 2 general election.

The Citizens League of Greater Minneapolis asked the candidates for biographical information and for their stands on eight issues important to Minnesota citizens. Their answers, numbered in the same sequence as the questions in the box on this page, follow:

House of Representatives 28th District

TED L. BIERNAT, 35, 224 Lowry avenue NE. Married, four children. Occupation, off sale beverages, owner. Attended University of Minnesota. Previous occupation, retail grocer. Army four and one-half years.

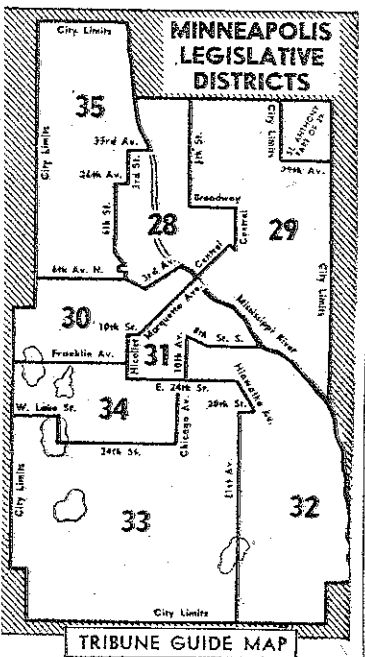


Public office held: state representative 1949, 1951, 1953.

Member Veterans of Foreign Wars, Holy Cross Ushers, Eagles, Knights of Columbus.

I have supported soldiers bonus, reapportionment, greater return of tax money to cities of first class, better arrangement and benefits under the workmen's compensation act, repeal of personal property tax, repeal of old age lien law. Democratic-Farmer-Laborite.

1. (a) Minnesota imposes a heavier tax burden on its taxpayers than the average state. It's time to call a halt by not in-



creasing our personal income taxes and by practicing a little economy in government. (b) I believe all tax programs should be based upon the principle of ability to pay. The mining companies have that ability to pay. (c) Assessors admit the personal property tax is not equitably applied and wonder if the small revenue is worth the grief and the expense of collection. I believe this tax should be abolished. It just isn't a fair tax. (d and e) A department of revenue should be established to serve as a single collection agency for the state. Establish a six-member advisory board to assist the commissioner of revenue. Create a three-member quasi-judicial board within the department to hear appeals from decisions of the commissioner. Their decisions would be independent of and superior to those of the commissioner. Transfer the collection of liquor stamp tax from the state treasurer to the department of revenue. Transfer the collection of auto license fees from the secretary of state to the department of revenue.

3. It seems to me that certain funds dedicated to some of the basic and fundamental causes which are for the betterment of the state should be protected by law so that neither the executive, legislative nor judicial branches of our state government could change them to suit their purpose. 4. Our national and state governments rest on a foundation of local government and will only be as sound and democratic as the local governments are. The local governmental unit is the laboratory of democracy wherein the citizens learn to play their part in government of the people. More home rule for cities and counties without unnecessary legislative interference. 5. The increase in the state

Questions Asked of Legislative Candidates

The Citizens League of Greater Minneapolis asked each legislative candidate the following questions. Their answers are numbered in the same sequence as the questions.

1. What changes in present fiscal policy will you recommend or support in these or other tax programs: (a) state income tax, (b) iron ore taxes, (c) personal property tax, (d) gasoline and motor vehicle taxes, (e) cigaret and liquor taxes, (f) other taxes?
2. If more revenue is needed in the next two years, will you favor increasing present taxes, enactment of a general sales tax or enactment of other new taxes? What new taxes do you favor?
3. Do you favor abolishing dedicated funds, with such revenue going into the general revenue funds to be spent as directed by the legislature?
4. Do you think first-class cities should be given added taxing powers? If so, what type of taxes do you favor?
5. Do you favor increasing basic state educational aids?
6. Do you favor: (a) a metropolitan transit authority to regulate public transportation in Hennepin and Ramsey counties? (b) a county or metropolitan park system? (c) a consolidation of city, village and township relief activities in Hennepin county under the county welfare board?
7. Do you favor replacing the Hennepin county supervisor of assessments with a county assessor who has power to make assessments (neither supervisor of assessments or county assessor would have jurisdiction in Minneapolis)?
8. Do you favor: (a) immediate steps to call a constitutional convention? (b) a compulsory state fair employment practices law? (c) party designation for legislators? (d) immediate reapportionment of legislative districts?

creasing our personal income taxes and by practicing a little economy in government.

(b) I believe all tax programs should be based upon the principle of ability to pay. The mining companies have that ability to pay.

(c) Assessors admit the personal property tax is not equitably applied and wonder if the small revenue is worth the grief and the expense of collection. I believe this tax should be abolished. It just isn't a fair tax.

(d and e) A department of revenue should be established to serve as a single collection agency for the state.

Establish a six-member advisory board to assist the commissioner of revenue.

Create a three-member quasi-judicial board within the department to hear appeals from decisions of the commissioner. Their decisions would be independent of and superior to those of the commissioner.

Transfer the collection of liquor stamp tax from the state treasurer to the department of revenue.

Transfer the collection of auto license fees from the secretary of state to the department of revenue.

(f) I don't advocate any new taxes. We have reached the limit of taxing people for the purpose of operating state government.

2. If more revenue is needed in the next two years probably some present taxes may be increased but I don't advocate a general sales tax as it places the extra burden on the little fellow.

3. It seems to me that certain funds dedicated to some of the basic and fundamental causes which are for the betterment of the state should be protected by law so that neither the executive, legislative nor judicial branches of our state government could change them to suit their purpose.

4. Our national and state governments rest on a foundation of local government and will only be as sound and democratic as the local governments are. The local governmental unit is the laboratory of democracy wherein the citizens learn to play their part in government of the people. More home rule for cities and counties without unnecessary legislative interference.

5. The increase in the state

basic aid from \$56 to \$80 per pupil unit in average daily attendance expires in July 1955. Basic aid should be increased to \$100 per pupil unit.

6. (a) I favor a metropolitan transit authority to regulate public transportation in Hennepin and Ramsey Counties; (b) I favor a metropolitan park system; (c) a county system of relief should be established.

7. Yes.

8. (a) I favor immediate steps to call a constitutional convention. Our present constitution just does not fit the needs of a modern Minnesota in many respects and is obsolete and unworkable.

(b) The state should adopt all measures necessary to protect the civil rights of all our people, regardless of sex, race, color, creed or national origin.

(c) Party designation should apply to all candidates, except the judiciary.

(d) Reapportionment is an urgent necessity, and the legislature should act accordingly. The constitution should provide that legislative failure to reapportion at the first session after each federal census would automatically transfer that responsibility to a non-legislative board with powers to act.

STANLEY J. FUDRO, 36, 2322 Second street NE. Single. Home builder and laborer.

Completed three years of college. Coast Guard three years. Previous occupation: boys director at NE. Neighborhood house. Member Golden Gloves committee, Corkers Club.

Organized an athletic program at the Margaret Barry Settlement house for the Corkers club. Democrat.



Fudro

1. (a) I favor a more equitable levying of this tax; (b) fairer tax return from the iron ore industry; (c) I favor elimination of personal property tax on household goods; (d) a fairer share of this tax to be distributed to the cities; (e) no additional taxes on cigarets or liquor; (f) oppose having the state impose any new taxes, including the sales tax.

2. The state can be more efficiently administered and new services required of the state

can be provided from existing sources of revenue.

3. Dedicated funds should be reduced with due regard for the needs of essential state services. The release of dedicated funds should aim toward the reduction of current taxes.

4. I believe the cities should have sufficient taxing authority so as to permit a lowering of the property tax.

5. I believe the cities should receive a fairer share of state educational aids.

6. (a) I favor a metropolitan transit authority, but to be appointed by the local governments affected.

(b) I would favor a county park system with proper safeguards to insure benefits to residents of the 28th district.

(c) I favor consolidation of welfare. This would provide greater efficiency and economy; also the needy aged and dependent would be better served.

7. I favor the adoption of the county assessor system for all of Hennepin county so that suburban tax rates will be equal with those of Minneapolis.

8. (a) Yes; (b) yes; (c) yes; (d) yes.

HENRY TADENSIK, 41, 307 Fourteenth avenue NE. Married, two children. Machinist, Northern Ord-

nance. Previous occupation, meat cutter. Member 49 Centennial club, P.N.A. Commercial club.

1. (a to f) No comment.

2. No. None.

3. No.

4. No.

5. Yes.

6. (a) No; (b) no; (c) no;

7. No.

8. (a) No; (b) yes; (c) no; (d) no.



Tadenisk

EDWARD (ED) TOMCZYK, 1614 NE. California street, incumbent representative, and **CASHAIR (PEANUTS) QWC-ZARZAK, 347** NE. Summer street, did not complete questionnaires.

29th District

GEORGE E. MURK, JOHN P. (SKEETS) SKEATE, incumbents, and CARL O. WEGNER will be nominated without contest. Their names will appear on the Nov. 2 general election ballot.

30th District

THOMAS N. CHRISTIE and two incumbents, **SALLY LUTHER** and **VERNE C. JOHNSON**, will be nominated without contest. Their names will appear on the Nov. 2 general election ballot.

Duties of State Legislators

The Minnesota senate has 67 members, one from each of the state's 67 legislative districts. The house of representatives has 131 members. The two bodies write laws of the state.

Representatives are elected for two-year terms, senators for four-year terms. This year all 198 legislative seats are to be filled by election.

The legislature meets every two years for a session of 90 working days—approximately four calendar months. Members are paid \$3,000 for each two-year period.

14 Are Seeking 'Job State Can't Keep Filled'

Minnesota has had recent difficulty in keeping its lieutenant governors on the job.

Gov. C. Elmer Anderson moved up to accept the governorship when Luther W. Youngdahl resigned. Ancher Nelsen quit the lieutenant governorship 17 months ago to become head of the rural electrification administration. State Sen. Donald O. Wright, who as president pro tempore of the senate was eligible to move in as Nelsen's successor, finally took over last week. He will serve until his successor is sworn in in January.

There will be 14 candidates scrambling for the post in the Sept. 14 primary election. One of six Democratic-Farmer-Laborites and one of eight Republicans will survive the primary and do battle in the general election Nov. 2.

The Minneapolis Tribune asked them to take a stand on six major issues. Their answers, numbered the same as the questions in the box on this page, follow:

Republican

LILLIAN R. CARLSON, 48, 234 N. Mississippi River boulevard, St. Paul, housewife. Married, no children. College graduate. Formerly social service case worker; cashier, state employment and security division. Former member League of Women Voters.



Mrs. Carlson

1. Reorganization of the tax structure.
2. Yes.
3. Yes.
4. I favor a careful scrutiny or re-examination to determine the adequacy of the present state aids.
5. (a).
6. (a).

M. (MIKE) HOLMAN, 56, 871 the primary and compete in York avenue, St. Paul, single. Assistant to president, North Star Metal Mines, Inc. College graduate. Former employee state auditor; managing editor, Murray County Herald, Slayton, Minn. Army one year. Engrossing clerk state legislature, six sessions. Member American Legion, AFL.

1. Taxes.
2. Both parties in this state have gone on record in favor of party designation for state legislators. I concur.
3. We know that conventions can be "rigged." Should radicals get in control of such a convention we would be in a bad way. Unless the most able people in the state were in agreement on this matter my answer would have to be NO.
4. The question of aids to public schools is now under study by a committee and I would be governed by the report of this committee. I doubt if the legislature will increase the present levels.
5. I would favor a state retail sales tax, provided food, clothing and other essential items were exempt. I would also consider it only as a replacement tax.
6. Under the present law, one-third of all the gas tax is distributed to the counties. The entire highway system in Minnesota today is in dire need of a complete overhaul, but needed more than anything else is more adequate transportation facilities in areas where farm-to-market travel is involved. There are

Lieutenant Governor Questions

The Minneapolis Tribune asked each candidate for lieutenant governor the following questions. Their answers are numbered in the same sequence as the questions.

1. What do you think will be the No. 1 issue before the 1955 state legislature?
2. Do you favor party designation for state legislators?
3. Do you favor calling a constitutional convention to rewrite the state constitution?
4. Should basic state aids to public schools be (a) increased, (b) kept at present levels or (c) reduced?
5. Do you favor enactment of a state retail sales tax as (a) a replacement for the personal property tax or (b) in lieu of increases in present taxes, if increases are needed?
6. Should the state provide more money for county and township roads (a) out of funds that now go to state trunk highways or (b) by raising either the state gas tax or the motor vehicle registration fees, or both?

still several communities totally lacking all-weather roads. This condition should certainly be rectified. In view of the report of the highway study commission, any improvement in county and township roads should come from the general revenue fund.

A. HERBERT NELSON, 51, 4025 Linden Hills boulevard, Minneapolis. Married, two children. Owner insurance business. University of Minnesota graduate. State commissioner of insurance 1951-53. Formerly active Jaycees, Aquatennial, Chamber of Commerce, two years on charter commission, Hennepin County Safety Council, Community Fund and Red Cross. Member several insurance clubs, Kiwanis, Blue Goose, Six O'clock club, Athletic club, Passe club. Says he



Nelson

took these steps as insurance commissioner in "interest of better service to insuring public": tightened agent standards, ruled out "coercion" by lending institutions, worked for lower fire insurance rates, ordered elimination of fire hazards at General hospital and St. Paul Ancker hospital under threat of closing them up. Ran for lieutenant governor 1944.

1. Money, budgets and taxes, highway financing, reducing our tremendous highway accident toll.
2. There are many objections to party designation, but good factors outweigh the undesirable.
3. Yes, if submitted to people for approval.
4. Yes, if funds are available, but the people must make a decision as to amount to be spent on schools and how money is to be spent.
5. The personal property tax is very much a detriment to Minnesota. I am in favor of abolishing it. What it should be replaced with should be submitted to the people for determination after they have been fully informed.
6. The past legislature appointed an interim committee of citizens with high qualifications to make a study of highway matters. I cannot intelligently answer this question until I have studied the committee's report.

EDWARD E. OLSEN, 74, Forest Lake, town clerk and insurance agent. Widower. Assessor 30 years Forest Lake township.



Olsen

1. Do not know.
2. Yes.
3. No comment.
4. Increased.
5. Yes.
6. Yes.

KERN OLSON, 55, Thief River Falls, president Main Avenue Motors, Inc. Married, 1 child. Member American Legion, Masons, Elks, several conservation units.



K. Olson

1. Taxes, roads, conservation.
2. No.
3. Yes.
4. Present levels.
5. No.
6. (a), No. (b), no.

P. KENNETH PETERSON, 39, 2305 W. Twenty-first street, Minneapolis, Insuror, P. Kenneth Peterson Co., single, college graduate. Formerly state GOP chairman, executive secretary to Sen. Thye. Navy four years. State legislature eight years; Council of State Governments seven years. P. K. Peterson Member American Legion, Delta Sigma Rho. Sponsored or supported as legislator state primary law, narcotics control, act, employment on merit, constitutional revision, party designation for legislators, state adoption code and military service tax allowance.



P. K. Peterson

1. Tax and fiscal policies, primary and secondary road legislation.
2. Yes.
3. Yes.
4. Basic state aids must be maintained, and increased consistent with ability of state to finance them.
5. No major new tax revenue would appear to be necessary during the coming fiscal year.
6. There is no question but that secondary roads require additional support to keep up with advancing highway needs in the state. It would require a constitutional referendum to alter existing dedicated funds. As such it will be for the people to decide.

RUSSELL H. UNDERDAHL, 30, White Bear Lake, manufacturer's representative Cortley Corp., New York. Single. Navy three years.



Underdahl

1. State sales tax.
2. Yes.
3. Yes.
4. Increased.
5. Under no condition should Minnesota have a sales tax.
6. By raising the state gas tax. The tax should be in proportion to the actual use of the highways, and this is result of gas sales. Giving a fair equalization of taxes—the more you use the highways, the more it costs.

THEODORE T. WOLD, 48, 19 St. Albans road, St. Paul, hotel broker and operator Midwest Hotel Sales Co. Married, one child. State hotel director eight years. Member Minneapolis Board of Realtors, Minnesota Hotel association, United Commercial Travelers, Masonic lodge, Scottish Rite.



Wold

1. Taxes — to continue to provide maximum state services and subsidize local government.
2. No comment.
3. Yes.
4. Basic aid to schools does increase as the school population grows. We must provide adequate funds for schools and these funds must be administered economically.
5. No, I do not favor a general sales tax.
6. While this is a legislative problem, we realize there are not enough funds from present gas taxes for both township and state highways. To provide better roads it will eventually be necessary to increase state gas taxes as other states with good roads have done.

DFL

LEONARD A. JOHNSON, 41, 4654 Harriet avenue, Minneapolis, city council administrator. Married, two children. University of Minnesota graduate. Navy 25 months. Formerly park commissioner, board of planning commissioners, now state representative. Member American Legion, Hennepin County TB association, A. F. & A. M., Big Brothers, Southside Business Men.



Johnson

1. Where do we go with our tax problem?
2. Yes.
3. Yes.
4. Until it can be shown to me who pays the increased costs, I favor keeping aids at present levels.
5. No. I feel that better use of our present taxes and revision of our dedicated and trust funds would not make necessary any increase in taxes.
6. I do not favor any increase in taxes and feel that, if at all possible, state trunk highway funds should go to county and township roads to a greater degree.

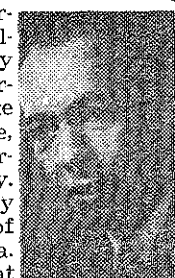
FREMONT PETERSON, 34, Ivanhoe, farmer. Married, member Farmers Union.



F. Peterson

1. Taxes.
2. Yes.
3. Yes.
4. (b).
5. No.
6. (b).

KARL F. BOLVAAG, 41, Rochester, life insurance general agent, McKean-Bolvaag Agency. Married, two children. Formerly state DFL chairman. Graduate St. Olaf college, honors in American history. Graduate study University of Minnesota. Scholarship at University of Oslo (Norway). Wounded World War II.



Bolvaag

1. Taxes and traffic control.
2. Yes.
3. Yes.
4. (a).
5. I favor a complete overhaul of our present tax structure and only if the personal property tax could be abolished would I favor an increase in taxes and then by referendum of the people.
6. (a).

Lieutenant Governor's Job

The lieutenant governor presides over the Minnesota state senate but does not have a vote. He becomes governor if a vacancy occurs.

He is elected for a two-year term and is paid \$3,000 a year.

awarded Silver Star. Member Veterans of Foreign Wars, Disabled American Veterans, Moose, Eagles, American Scandinavian foundation, Norwegian American Historical society. Lobbied for DFL in 1951 and 1953 legislative sessions. Endorsed by DFL convention.

1. Sales tax, school financing, reorganization of conservation department.
2. Yes.
3. Yes.
4. Nothing less than present levels will suffice.
5. I am unalterably opposed to a retail sales tax.
6. The state should provide for better farm-to-market roads. With better management it should be possible to get vastly improved services from present funds with a more equitable distribution.

AXEL MORGAN SODERBERG, 56, 1069 Sherburne avenue, St. Paul, clerk Minnesota Transfer Railroad Co. Married, one child. St. Paul police department, 27 years. Member Masonic order, Scottish Rite, Shrine, Railroad Clerks local 869, various police organizations, active Boy Scouts.



Soderberg

1. Taxes and traffic control.
2. Yes.
3. Yes.
4. (a).
5. I favor a complete overhaul of our present tax structure and only if the personal property tax could be abolished would I favor an increase in taxes and then by referendum of the people.
6. (a).

C. EDWIN HOLMBERG, 3208 Thirty-first avenue S., Minneapolis, and **DENNIS J. MALONEY, 126 E. Ninth street,** St. Paul, DFL candidate for lieutenant governor, did not reply to the Tribune questionnaire.



"Didn't you forget to bring something with you?" —Lewis in Milwaukee Journal

BE SURE TO VOTE TUESDAY in Your Primary Election

DFL Race Highlights Gubernatorial Primary

By JOHN C. McDONALD
Minneapolis Tribune Staff Writer

The field of candidates for this year's gubernatorial race in Minnesota is a slim one, but powerful.

The incumbent, C. Elmer Anderson, faces no primary contest Tuesday because he is the only Republican candidate. His name will appear on the primary ballot, however, because of a 1953 law making such provision for unopposed candidates for partisan offices.

Over on the Democratic-Farmer-Labor side of the ballot, the story is different. There Orville L. Freeman, endorsed last April by the party convention, is opposed by Paul A. Rasmussen, a state railroad and warehouse commissioner who once was budget commissioner for Gov. Floyd B. Olson.

The Tribune has asked the candidates to take a stand on six major issues (see question box above). Their answers, printed in today's Voters Guide, will help you choose the candidate for whom you wish to vote.

Republican

C. ELMER ANDERSON, 42, route 6, Brainerd, Minn., governor since 1951. Owner of publication sales agency. Married, three children. Elected lieutenant governor six times. Member Rotary, Masonic bodies, Eagles, Moose and Elks.



Anderson

1. Balancing budget for next biennium.

2. Yes.

3. Yes.

4. Basic aids should be increased in proportion to increased costs, providing, of course, the people of Minnesota are willing to make the additional necessary revenue available.

5. Until such time as I am convinced of the absolute necessity of a retail sales tax, I am opposed to it.

6. With this question under study by professional and technical groups at the direction of a legislative interim committee, I believe it only fair to withhold comment from the executive branch at this time. I do believe the present situation is out of balance.

DFL

ORVILLE L. FREEMAN, 36, 2316 Seabury avenue, Minneapolis, attorney. Married, two children. Graduated with high honors, Phi Beta Kappa, from University of Minnesota and from "U" law school. Football "M" man, president All - University council, member editorial board Minnesota Law Review. Purple heart veteran marine corps, major in reserves. Former member Minneapolis civil service commission and assistant for veterans affairs to mayor (Hubert Humphrey).



Freeman

Former secretary DFL central committee, state DFL chairman, candidate for attorney general 1950, governor 1952. Active past four legislative sessions as party lobbyist. Member veterans organizations, United Nations association, Town Meeting association, National PTA congress, Moose, Eagles, Iron Wedge, State Bar

GOVERNOR QUESTIONS

The Minneapolis Tribune asked each candidate for governor the following questions. Their answers are numbered in the same sequence as the questions.

1. What do you think will be the No. 1 issue before the 1955 state legislature?
2. Do you favor party designation for state legislators?
3. Do you favor calling a constitutional convention to rewrite the state constitution?
4. Should basic state aids to public schools be (a) increased, (b) kept at present levels or (c) reduced?
5. Do you favor enactment of a state retail sales tax as (a) a replacement for the personal property tax or (b) in lieu of increases in present taxes, if increases are needed?
6. Should the state provide more money for county and township roads (a) out of funds that now go to state trunk highways or (b) by raising either the state gas tax or the motor vehicle registration fees, or both?

association, Jaycees, Co-op Services, Inc., AFL Municipal and County Employees union, Delta Sigma Rho speech fraternity, Family & Children's service, Minnesota Association Claimants Compensation Attorneys and moderator Minnesota Forum Television program.

1. Fiscal reorganization to prevent repetition of serious losses of taxpayers' money through inefficiency and negligence.

2. Yes.
3. Yes.
4. Increased.
5. No.

6. This question I do not feel competent to answer until findings and recommendations of present interim highway study commission have been made available and I have had time to study them.

PAUL A. RASMUSSEN, 58, Chatfield, Minn., state railroad and warehouse commissioner. Married, four children. Graduate St. Olaf college. Served army two years. Former faculty member, Concordia college. State budget commissioner and personnel director (appointed by Gov. Floyd Olson), and Chatfield businessman dealing in farm machinery, livestock, farming and transfer business. Member American Legion.



Rasmussen

1. An equitable tax structure.

2. No, because a large number of independent voters in our state would not be represented.

3. Yes.

4. Increased, if a ceiling is placed on the trust funds.

5. No.

6. Only by increases in the motor vehicle registration fee and as a result of increasing the gross earnings tax on railroads.

Governor's Duties

The governor, elected to a two-year term, is Minnesota's chief executive officer and commander of the state's military forces. He serves as ex-officio member of the pardon board, executive council, investment board and various other agencies.

The governor appoints the heads of state departments and fills a number of other offices by appointment. He passes upon bills voted by the legislature and has the right of veto. He may call special legislative sessions, but rarely does so.

Duties of the State Auditor

The state auditor is responsible for administration of Minnesota's financial affairs. He maintains the general books, accounts and records and prescribes the uniform accounting system to be used by all departments.

Candidates Unopposed for Auditor

Both Republican and Democratic-Farmer-Labor parties have only one candidate for state auditor this year, so each will be nominated without opposition in Tuesday's primary election.

Their names will appear on the primary ballot, however. The Minneapolis Tribune asked them for brief information about themselves and their activities.

Republican

STAFFORD KING, 60, 1919 Stanford avenue, St. Paul. Married, two children. State auditor since 1931. Veteran of Mexican border war of 1916, World War I and World War II, now inactive lieutenant colonel. Twice Republican candidate for governor. Member American Legion, Veterans of Foreign Wars and Disabled American Veterans, Masonic orders, "M" club, Saintpaulites, Inc., several public officials organizations, advisory council on civil defense and Minnesota Safety council. Sponsored 1931 conservation consolidation act and 1951 legislation which authorized investment of idle treasurer's cash.



King

DFL

CLINT HAROLDSON, 46, Renville, Minn., farmer. Married, one child. Chairman Renville County Farmers Union and Renville County DFL. Served six years as school board clerk and now is director of Renville Co-op Oil Co. and Renville Co-op Transport association. Represented Renville and Kandiyohi county in testifying before congressional agriculture committee on farm legislation. Endorsed by DFL central committee.



Haroldson

Minneapolis Morning Tribune

PART 3

Voter's Guide

Prepared with the assistance of the
Citizens League of Greater Minneapolis

Minneapolis, Minn., Friday, September 10, 1954

3 in GOP, 2 in DFL Seek Mrs. Holm's Job

Five candidates for secretary of state—three Republicans and two DFLers—will be whittled down to one from each party after Tuesday's primary. General election will be Nov. 2.

The Minneapolis Tribune asked candidates to supply brief information about themselves and their activities.

Republican

EUGENE W. ANDERSON, 50, 2406 NE. Buchanan street, Minneapolis.

Pastor of Lowry Avenue Baptist church and owner "Bing" Realty Co., president Lakeland Development Corp. Married, four children. Theology graduate Moody Bible Institute, post graduate work at Northwestern schools, farmed three years. Member Northeast Minneapolis Ministerial association, PTA and St. Anthony Gun club.



Anderson

MRS. MIKE HOLM, 52, 4535 Bloomington avenue, Minneapolis, secretary of state since September 1952.

Widow, one child and one foster child. Formerly private secretary and office manager. Member Order of the Eastern Star, Business & Professional Women's club, Zonta. Reorganized motor vehicle department and originated new four-digit licenses to be used in 1955.



Mrs. Holm

W. D. (JACK) RITTER, 44, Anoka, Minn., wholesaler barber supplies. Married, one child. Formerly in public relations. Member A. F. & A. M., O.E.S., 32nd degree Scottish Rite, Educational lodge. Candidate same office two years ago. Traveled Minnesota for 20 years.



Ritter

DFL

JOSEPH L. DONOVAN, 61, Duluth, office man Credit Sales Co. Married, one child. Formerly district manager census, smaller war plant office. war production board. Member Knights of Columbus, citizens tax committee, Chamber of Commerce. Endorsed by DFL central committee.



Donovan

Secretary of State's Duties

The secretary of state is official custodian of state papers and legislative records, public and private corporation papers and original federal survey notes of Minnesota and township plats drawn from these notes.

The secretary, elected for a two-year term at \$11,000 a year, is in charge of state election machinery, preparation of ballots and collection of returns, and publishes state laws. He also is registrar of motor vehicles, delivers license plates and conducts chauffeurs' examinations.

KOSCIE H. MARSH, 51, 602 Western avenue N., St. Paul, retired druggist. Married. Graduate University of Minnesota, served in army World War II. Member Eagles, Moose, A.F. & A.M., American Legion, Disabled American Veterans, civic groups. Backer of state-controlled horse racing (because of which he lost DFL convention endorsement), luminous automobile plates, and removing motor vehicle registration from secretary's office.



Marsh



"Didn't you forget to bring something with you?"

—Lewis in Milwaukee Journal

VOTE TUESDAY

28 Seek County's 9 Senatorial Seats

By JOHN C. McDONALD
Minneapolis Tribune Staff Writer

Twenty-eight candidates seek nomination in the Sept. 14 primary election to Hennepin county's nine state senatorial seats.

Two of them — incumbent Senators Donald O. Wright and Gerald T. Mullin, 30th and 35th district, respectively — are unopposed for nomination or election, so their names will not appear on the primary ballot. There will be contests in the other seven districts, and 14 nominees will go on to do battle in the Nov. 2 general election.

Senators are elected for four-year terms. This is the first time since 1950 that their seats have been up for contest.

The Citizens League of Greater Minneapolis asked the candidates for biographical information and for their stands on eight issues important to Minnesota citizens. Their answers, numbered in the same sequence as the questions in the box on this page, follow:

SENATOR 28th District

FRED G. GOFF, 34, 522 Third avenue NE., engineer assistant, G. M. Orr Engineering Co.



Goff

Single. Graduate, University of Minnesota. Formerly director of USO. Member Young Republicans, Jaycees, Citizens League. Favored licensing reform in Minneapolis. Legislative redistricting, state constitutional revision. Political affiliation undecided.

1. (a) Investigate possibility of instituting withholding tax system. Provide funds for department to review tax forms for improper returns. Eliminate present system of free preparation of tax returns in cities of first class.

(b) Tax based on ability of mining industry to maintain a competitive status with east coast and South American markets now developing. Expand labor credit law to include high cost ore as well as low grade ore.

(c) Eliminate present tax on household goods and inventories. Review all phases of the tax law to eliminate features which prove uneconomical and inefficient to collect.

(d) Maintain at current level until further study of the present tax structure can be completed. Determine the possibility of increasing tax on trucks to bring their rate in line with present heavy usage of the highways.

(e) This is an area where increased taxation is justified since it is a luxury item.

(f) Consider no new taxes until the present tax structure is studied to determine whether the most is obtained from the present taxes.

2. Rather than enact new taxes, attempt to make present taxes take care of government needs. Generally oppose sales taxes in favor of increased taxes in the present system. With a tightening of the tax structure and inauguration of some of the governor's efficiency report features, new taxes may not be necessary. No new taxes until a thorough study is made of the present system.

3. Generally favor abolishing the dedicated funds with such

Questions Asked of Legislative Candidates

The Citizens League of Greater Minneapolis asked each legislative candidate the following questions. Their answers are numbered in the same sequence as the questions.

1. What changes in present fiscal policy will you recommend or support in these or other tax problems: (a) state income tax, (b) iron ore taxes, (c) personal property tax, (d) gasoline and motor vehicle taxes, (e) cigaret and liquor taxes, (f) other taxes?
2. If more revenue is needed in the next two years, will you favor increasing present taxes, enactment of a general sales tax or enactment of other new taxes? What new taxes do you favor?
3. Do you favor abolishing dedicated funds, with such revenue going into the general funds to be spent as directed by the legislature?
4. Do you think first-class cities should be given added taxing powers? If so, what type of taxes do you favor?
5. Do you favor increasing basic state educational aids?
6. Do you favor: (a) a metropolitan transit authority to regulate public transportation in Hennepin and Ramsey counties? (b) a county or metropolitan park system? (c) a consolidation of city, village and township relief activities in Hennepin county under the county welfare board?
7. Do you favor replacing the Hennepin county supervisor of assessments with a county assessor who has power to make assessments (neither supervisor of assessment nor county assessor would have jurisdiction in Minneapolis)?
8. Do you favor: (a) immediate steps to call a constitutional convention? (b) a compulsory state fair employment practices law? (c) party designation or legislators? (d) immediate reapportionment of legislative districts?

going into the general revenue fund.

4. No.

5. Yes. To the amount recommended by educational groups in the state. Also the aid on the basis of hours a student is in school should be changed. Aid should be on basis of student enrolled regardless of hours spent in school.

6. (a) Yes. The problems of transportation in the metropolitan area are similar and should be approached on a metropolitan basis. Such an authority should have a research staff to study the problems of mass transportation on a continuing basis. (b) A metropolitan park system would be more useful for cities located in a large group. A county system might be more useful for the areas not so closely located. (c) Yes.

7. Favor a county assessor with power to make assessments.

8. (a) yes; (b) yes; (c) yes; (d) yes, favor establishment of a unicameral legislature to replace the present two house system.

Before further taxes are levied, set up some needed reforms in the tax structure. Establish a department of revenue as single collection agency for the state.

RAYMOND J. JULKOWSKI, 46, 1929 NE. Third street. Married, four children. Lawyer. BA, LLB degrees.



Julkowski

State representative two terms, state senator since 1938. Member Minnesota State Bar association, Knights of Columbus, Minnesota Bankers association, Polish White Eagle association. Democrat.

I have sponsored a great many labor bills; civil service; old age assistance; pensions for teachers, policemen, firemen, city employees; welfare bills; bills directly affecting Minneapolis and Hennepin county and too many others to enumerate here.

1. (a) State income tax. If re-elected, I shall introduce legislation to reduce this tax which is one of the highest in the United States.

(b) I have always fought for

increases in iron ore taxes, but in view of the fact that tax bills must originate in the house of representatives my work as a senator has not been effective, and my hands have been tied.

(c) I have introduced, and will continue to introduce, bills to abolish this tax.

(d) Cities of the first class are not getting a fair share of these taxes, and I shall do my utmost to see that we get a break.

(e) These taxes are entirely too heavy and should be reduced.

(f) I am absolutely opposed to a sales tax or any other new taxes. With millions of dollars tied up in dedicated funds, it is ridiculous to speak about new taxes.

2. I will oppose the sales tax program. If more revenue is needed, I will study all possible sources before deciding. Our taxes are too high and I do not favor any new taxes.

3. I have always favored abolishing dedicated funds.

4. No.

5. I certainly do.

6. (a) Yes; (b) yes; (c) yes.

7. Yes, I would as long as he had no jurisdiction in Minneapolis.

8. (a) Yes; (b) yes; (c) yes; (d) yes.

HAROLD KALINA, 26, 2015 NE. Fourth street, lawyer. Married. BSL, LLB, University of Minnesota.

Formerly postal employee. Served United States army. Member Third Ward DFL, "M" club, Veterans of Foreign Wars, YDFL. Democratic Farmer-Labor.

1. (a) I believe another increase in the basic exemption is necessary to give relief to low-earning groups.

(b) Readjustment in the iron ore occupation tax is necessary. At the present rate of assessment this industry is not contributing its just share.

(c) I favor repeal of provision taxing household goods and favor a more equitable method of assessments for small business.

(d) We are at the peak as

far as this tax is concerned. I favor legislation which will give cities of the first class a greater return.

(e) At the present time the tax on liquor and cigarets exceeds the cost of the product. I would favor a decrease only if it will not force a general sales tax on the people.

(f) I don't favor any new taxes such as wheelage taxes, etc. I oppose a direct or indirect sales tax.

2. See No. 1 (f).

3. I do not favor dedicated funds and believe that if funds must be dedicated that a limit should be placed upon them.

4. This question in effect asks whether a constitutional convention should be called. This is a constitutional problem. Before any new taxing power can be given the state constitution must permit it.

5. Yes.

6. (a) If it is economically feasible and would alleviate and correct the problems faced in these two counties I feel it would warrant serious consideration; (b) an inclusive park system is long overdue; (c) yes, if it would provide for efficient administration.

7. I have not properly reviewed this problem and do not feel qualified to answer it at this time.

8. (a) Yes, a constitutional convention is necessary before any real progress can be made to streamlining the administration of our state government; (b) yes; (c) yes; (d) yes.

TONY J. ORLICKI, 53, 201 Twentieth avenue NE., heavy equipment operator for Hennepin county. Married, four children. Formerly grocer, butcher.



Orlicki

Army three and one-half years. Member VFW, National Veterans' association, Polish White Eagles Labor union AFL, Chairman Hennepin County F.L., Disabled American Veterans. Supported NW. Neighborhood house and Bottineau field improvement. Farmer-Labor and Democratic.

1. (a) I favor more equitable levying of this tax; (b) increase this levy; (c) as at present should be abolished; (d) retain tax on motor vehicles; (e) will give earnest consideration; (f) no answer.

2. I oppose sales tax and increase in present taxes for state purposes. Desire increase in efficiency in state service to eliminate need for new taxation.

3. These funds should be used for present unmet needs.

4. Yes, bus and truck taxes and payroll taxes.

5. Yes.

6. (a) No; (b) yes; (c) yes.

7. I favor a county association

Duties of State Legislators

The Minnesota senate has 67 members, one from each of the state's 67 legislative districts. The house of representatives has 131 members. The two bodies write laws of the state.

Representatives are elected for two-year terms, senators for four-year terms. This year all 198 legislative seats are to be filled by election.

The legislature meets every two years for a session of 90 working days — approximately four calendar months. Members are paid \$3,000 for each two-year period.

tion with jurisdiction in Minneapolis.

8. (a) Yes; (b) yes; (c) yes; (d) yes.

THEODORE A. TOMASZEWSKI, 41, 311 Twenty-third avenue N. Married, one child. Railway switchman, formerly freight agent. Park commissioner past five years. Member Knights of Columbus.



Democrat. Farmer-Laborite.

1. (a) withholding system should be established; (b) Tomaszewski should be increased; (c) should be repealed; (d and e) no answers; (f) no new taxes at present. A stricter economy should be practised. There is an appalling amount of waste in this state.

2. I believe the working class is already taxed to the limit, and therefore cannot bear the brunt of any new taxes. I favor only those types of new taxes from which the ordinary wage earner will be exempt.

3. No, but a limit should be placed on dedicated funds.

4. Yes. Payroll earning taxes, to be paid by those who work in first-class cities but who reside outside these cities.

5. Yes. Increase basic aid \$90 per pupil unit.

6. (a) Yes; (b) metropolitan; (c) yes.

7. Yes.

8. (a) Yes; (b) yes; (c) I believe the merits of the legislators are paramount to any party designation; (d) yes.

SENATOR 29th District

EMMETT L. DUENKE, 2730 Stinson boulevard. Married, three children. Printer and publisher, Argus Publishing Co.



Duemke

Inc. State representative 1939-44, senator 1944 to present. Named one of Minneapolis' 100 young men, commodore Aquatennial 1952. Member I.O.O.F. Eagles, Moose, Jaycees, A.F. & A.M. Central avenue Commercial association, Minnesota Benefit association.

Also member Minnesota Editorial association, Optimist club, charter member NE. Lions club, charter member NE. Kiwanis club, Minneapolis PTA, Citizens League of Greater Minneapolis, Muscular Dystrophy association of Minneapolis, Multiple Sclerosis association of Minneapolis, St. Anthony Commercial club, Royal league, Ancient Order of United Workmen.

Condensation of Duemke's legislative statement: as senator, I have supported university appropriations to new high school basic aids. Fought for equitable return of the city's share in all categories. As chairman of motor vehicle committee, I have introduced legislation cutting vehicle license expenditure and raising highway safety standards. Introduced bills to lower personal property taxes and tighten collection systems. Sponsored a bill to license real estate operators.

1. (a) State income tax: I am not interested in increasing the tax, but tightening loopholes;

(b) I have always supported increased iron ore taxes and certainly would not hesitate to continue to do so.

(c) I introduced a bill to cut personal property tax 40%—a

tax which would save money. Briefly, 3 "business inventory" which raises a million dollars dollar total collection, assessed would be present 33% and true value cent tax.

This would 12 million dollars more than be raising loopholes, estimated extra 1 by the following "The state commission shall con valuation of personal property for the same pe

(d) I do not essay to include hicle taxes.

(e) I do not be many changes categories at t

(f) I have fought state sa

2. I do not creased taxation loopholes are the state income property tax c

3. (a) None.

3. In certain

4. Adding ta first class cities table distribut come should cities. If this would not be n any additional

5. Yes.

6. (a) Yes, I bill in the 1953

(c) yes, if su written that wi isfy the major cal subdivision is "pushed ar

7. I am still s ter and will m as to my stand shortly.

8. (a) Yes.

(b) Yes.

(c) I am not on the feasibility because it would in

I have not completely, an could get a b would include county offices state offices, I be in a position legislation.

(d) Absolute

DONALD M.

813 Seventh str three children. ner in firm La son, Loevinge Lindquist, Fre man and Frase College educa

tion, BA an LLB. Navy 194 to 1946. Membe American Vete ans committe

Young DFL Minneapolis Citizens Committee on Public Education, Citizens League Minneapolis, M

eign Policy assi sity District in ciation. Democ

borite.

Supported "C Week," 7½-mile man council ca

1. (a) Use o principle to aid

(b) Continue tatonite develo to favor high grade ore.

(c) Eliminate erty tax on h Reform busine erty tax to avo ing from Ma date.

(d) No chan

(e) No chan

(f) Believe out of real esta it to the cou schools.

2. Oppose s

se more
on class
bracket,"
ately 30
2-million-
property
return
from the
f the full
a 20 per

collection
would
by plug-
ing an es-
n dollars
revision:
er of tax-
he listed
on the
return

it is nec-
otor ve-
here will
these two
session.
viciously

any in-
essary if
in both
personal
s.

es, yes.
wers for
ore equi-
state in-
e to the
done, it
to grant
powers.

ed such a
(b) yes;
ll can be
pt to sat-
the politi-
at no one

this mat-
statement
situation

ately sold
uch legis-
not statis-
the legis-

the door-
bly if we
ften that
city and
with all
ly would
vor such

SEER, 30,
Married,
ey, part-

fraser
of Greater
olis For-
a, Univer-
ent Asso-
armer-La-

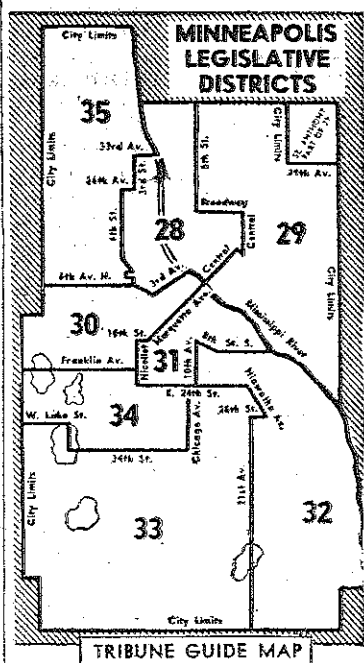
School
l levy, 13
hholding"
action.

erence to
but tend
on high-

nal prop-
ld goods.
onal prop-
lems aris-
ssessment

ould get
and leave
cities and

x. Princi-



ples of income tax should be followed if new revenue necessary.

3. Yes, but believe that state income tax should continue to be first for education in recognition of the primary importance of educating our children.

4. I favor giving cities more power to determine what kind of tax it should impose. Type of tax should be left to each city to determine for itself.

5. Yes, but I also favor tightening up qualifications for receiving equalization aids.

6. (a) Yes; (b) yes; (c) yes.

7. Would prefer to have any change in present system tied into statewide program of maintaining uniform assessments throughout the state. Would also like to see an internal policing system developed to insure fair and honest assessment work especially in personal property assessments.

8. (a) yes; (b) yes; (c) yes; (d) yes.

JACQUELINE GARDNER, 147 Orlin avenue SE., did not complete the Citizens League questionnaire.

SENATOR 30th District

DONALD O. WRIGHT, 1112 Washburn avenue S., incumbent senator, will be re-elected without opposition. A questionnaire was not sent to him.

SENATOR 31st District

KENNETH W. ANGSTMAN, 1500 Third avenue S., and **RALPH L. MAYHOOD**, 1810 Washington avenue S., did not complete the Citizens league questionnaires. Mayhood is incumbent senator.

CHARLES E. MORGAN, 47, 1805 First avenue S. Married, four children. Real estate broker, owner-manager, Morgan Investment Co. Studied accounting at University of Minnesota. Member Local 9 City and County Employees union, A. F. & A. M., Eighth Ward DFL. Democratic - Farmer-Laborite.



Morgan

1. (a) Withholding and prosecution of delinquents; (b) raise on high-grade ores; (c) assessments based on annual average personal property; (d) increase on heavy vehicles; (e) no change; (f) (no comment).

2. Proper administration would not require a substantial increase. No new taxes favored.

3. No, I favor a maximum limit established and the surplus transferred to the general

funds to be spent as directed by the legislature.

4. Yes—gross earnings.

5. Yes.

6. (a) Yes; (b) county; (c) yes.

7. Depends upon the comparative duties and jurisdiction of office.

8. (a) Yes; (b) yes; (c) yes; (d) yes.

FRANK P. PUGLISI, 47, 1715 Stevens avenue. Married, two children. Insurance agent, mutual service companies. BA degree. Previous occupation teaching. Army 32 months. Member Life Underwriters association, Moose, Italian Progressive club, Twin Cities Symphony chorus, Insurance Agents Puglisi local. Democratic-Farmer-Laborite.



Puglisi

1. (a) Favor a deduction on payroll so that everybody will pay this tax. There is a good percentage who do not pay at present.

(b) I would attempt to increase this tax to a point where it would be a fair tax.

(c) Eliminate this tax on household goods and enforce it on the rest.

(d) No change.

(e) Favor increase.

(f) (No comment.)

2. There is no need to increase taxes if the present trust funds are frozen. I am definitely against a sales tax.

(a) None. If there should be a need I would increase present taxes.

3. I don't favor abolishing them but favor freezing them at present level and use the revenue for school aid.

4. Yes. Payroll tax would be the fairest.

5. Yes, I would favor increasing this basic aid—from the present \$80 to at least \$90 per pupil.

6. (a) Yes.

(b) In a large city like Minneapolis a metropolitan park system will serve the people best.

(c) I would favor consolidation of welfare activities.

7. I am a candidate within the city limits so this would not apply.

8. (a) Yes, the constitution must be changed to meet the present needs.

(b) Yes—I favor an FEPC act with teeth in it.

(c) Yes. A legislator definitely must account to someone—you can't serve two masters.

(d) Yes.

SENATOR 32nd District

MARVIN H. ANDERSON, 36, 5234 Thirty-second avenue S. Married, two children. President, treasurer

Marvin H. Anderson Construction Co., Anderson Butler Construction Co. Education high school. Previous occupation, construction superintendent. Army five years. Senator eight years, incumbent. Member Veterans of Foreign Wars, American Legion, Lions, Carpenters Local 7. Caucus with the Liberals.



Anderson

1. (a) Remain the same; (b) should be increased; (c) the entire personal property tax should be abolished, but the big question is how to replace the revenue lost; (d) against any increase because of a lack of a fair and just return to the cities; (e) remain the same; (f) opposed to a general sales tax.

2. Oppose sales tax. As for increasing present taxes on a broad level I believe it is time

to tighten up our belts and stay within our income. A complete review of taxes paid by utilities should be made. (a) None at present.

3. Yes and no. Certain funds could be abolished or at least a limit placed on their growth.

4. Yes, but if these powers are given I don't believe they will ever be put to use.

5. I favor it, but at present there are no funds available to do this. As I stated before I am opposed to increasing the state income tax.

6. (a) Yes, but I would not care to see the cities paying the bill alone such as we are now doing with the airports commission; (b) no, I can see no use for it—I believe this is a responsibility for citizens of each community to decide for themselves; (c) I would prefer to withhold an answer on this question until more study has been made on the effect of such a consolidation.

7. Yes.

8. (a) Yes; (b) have voted yes for this matter several times; (c) undecided; (d) yes. any member from the three large cities is.

A. G. MATTHEWS, 65, 5248 Twenty-eighth avenue S. Married, no children. Retired. Attended University of Minnesota of Minnesota two years. Formerly an accountant. Public office held: deputy county treasurer. Lincoln county. Member Masons, O.E.S. Supported credit union law. Non-partisan.

1. (a) Use part for general expenses; (b) as is; (c) eliminate; (d) more for city and county of present tax; (e) as is; (f) no sales tax—reduce if possible other taxes.

2. No sales tax. Many do not now pay income tax, but withholding at sources will take care of this.

3. Fifty per cent to general revenue.

4. Yes—can't say at present (what type of taxes).

5. Yes.

6. (a) Yes; (b) yes; (c) yes.

7. Yes.

8. (a) Yes; (b) yes; (c) no; (d) yes, limit all office holders to two consecutive terms.

JACK N. OMVEDT, 42, 4201 Twenty-sixth avenue S. Married, three children. Lawyer. Graduated University of Minnesota and Washington law schools. Former tax consultant Northwest Airlines. Navy two years. Member American Legion, Aquatennial association, Minnehaha-Lake association.



Omvedt

I was instrumental in consolidation of Lake county schools, first consolidated schools in state, resulting in improved rural education. I have had 20 years of activity in state politics in support of conservation, modern tax methods, improved education and efficiency in government. Democrat.

1. (a) Replace \$10 and \$30 credits with exemptions of \$800 for each member of family as in federal law. Favor strict and thorough tax enforcement.

(b) Re-evaluation of tax structure both from ability to pay and competitive factors, with due regard to effect on employment and conservation.

(c) Abolish tax on household goods, revise formula on inventories to fairly reflect business volume and ability to pay.

(d) Must be based on use and benefit—in highways we get what we pay for.

(e) Any further increase will result in drying up revenue and causing bootlegging.

(f) Since many of our state activities benefit special economic groups, study may re-

veal additional or increased license fees to finance.

2. The only solution is a complete revision of entire tax structure.

3. (a) The only area in which dedicated or reserve funds should exist is for the legitimate purpose of reserves to replace or restore the depletion of resources, and to maintain sinking fund to maintain school plants; (b) The balance should be freed for use approved by legislature.

4. Definitely. That should be a municipal matter.

5. I do.

6. (a) I long have advocated this, and its jurisdiction should extend to all types of transportation—bus, taxi and private hauling—so we may have complete service in all areas; (b) yes; (c) yes.

7. I favor uniform statewide assessments similar to Wisconsin.

8. (a) Yes; (b) yes—with adequate safeguards to small business; (c) yes; (d) yes.

KENNETH PETERSON, 4405 Forty-third avenue S., did not complete the questionnaire.

SENATOR 33rd District

OLIVER E. JOHNSON, 3436 Fifth avenue S., did not complete the questionnaire.

ERWIN A. PETERSON, 39, 5416 Logan avenue S., attorney. Married, two children. Formerly attorney federal government. Member Lake Harriet lodge 227, Scottish Rite, Iowa Bar association, Hennepin County Bar association and Minnesota State Bar association. Affiliated with neither political party.



E. Peterson

1. (a) No increase in state income tax; (b) if more state revenue is needed, would favor increasing iron ore taxes; (c) favor eliminating personal property tax; (d) if more revenue is needed for improvements of state highways, I favor increasing these taxes to meet the needs; (e) no change.

2. If more revenue is needed, I favor eliminating waste and duplication in government bodies before increasing other taxes. I am opposed to a general sales tax.

3. I presently favor abolishing dedicated funds. However, I feel I need to give some more study to the merits of earmarking revenue for dedicated fund purposes.

4. No.

5. I favor increasing basic state educational aids to the extent necessary to provide the highest standard of education for our children.

6. (a) Yes.

(b) At present, I don't see any need for a change in the park system.

(c) If consolidation of city, village and township relief activities would result in a saving to taxpayers and still provide necessary services to the needy, I would very much favor it.

7. I am not aware of the particular problem involved in this question. At present, I have no ideas on the subject.

8. (a) Yes, it is high time our state constitution be revised and brought up to the needs of the present day requirements; (b) I favor an educational and compulsory state fair employment practice law; (c) I favor party designation for legislators; (d) if elected, I plan to do everything possible to see that the legislature carries out the constitutional requirement for reapportionment of legislative districts.

CHARLES W. ROOT, 54, 5104 Colfax avenue S. Married,

two children. Attorney, Everett, Thiel and Root.

Graduate University of Minnesota law school, AB and LLB. Previous occupations, hod carrier, truck driver, millwright, baker, teacher. Public offices; representative six years, senator

four years, incumbent. Member Hennepin County Bar association, Minnesota State Bar association, American Bar association, United Commercial Travelers, Masons, Lions, Business forum.

Supported original mental health act, youth conservation act, act for provisional commitment of mental patients, act for screening and discharging of mental patients, Minnesota Mann act, registration of lobbyists, party designation, reapportionment, school aids, recodification of school laws, adoption laws, metropolitan transit commission. Republican.

1 and 2. For two years non-partisan committees of outstanding and qualified citizens and legislators have been studying carefully each of these problems. Their reports have not been made yet.

3. No—for reasons that cannot be explained in 75 words.

4. All first-class cities are in dire financial straits. Unless the people are willing to reduce their demands for services, then the cities must either have additional taxing powers or a greater share of state taxes.

A greater proportion of the gross earnings tax would help considerably, thus eliminating any new taxes. While I do not favor any new taxes as such I could suggest an income tax on all people employed within the limits of the city.

5. Yes—if there are funds within the income tax to pay more.

6. (a) I authored such a bill last session; (b) no, we have paid for and now have a good city park system... I can see no reason for burdening citizens of Minneapolis with another; (c) no—for reasons that cannot be explained in 75 words.

7. Yes.

8. (a) Only if the people have the opportunity of voting on any revision.

(b) I voted for such a bill at the 1951 and 1953 sessions; (c) yes—I have authored such a bill three times; (d) yes.

SENATOR 34th District

DANIEL S. FEIDT, 46, 1715 W. Franklin avenue. Married, three children. Attorney private practice.

LLB University of Minnesota. Four years in army air force combat intelligence. Member Masons, Jaycees, Minneapolis Chamber of Commerce.

Offices held: representative two years, senator 16 years, incumbent. Republican.

Sponsored civil service, youth conservation commission, legislative research committee.

As a matter of personal political policy, I believe it inadvisable during a campaign to commit myself to support or oppose any specific piece of proposed legislation.

The best guide as to what may be expected of a candidate up for re-election is the kind of service he rendered in the past

Senator

Continued on Page Four.

Senator

Continued from Page Three

and the stand he then took on issues.

Consequently, and within the limits of the above statement and in answer to your questionnaire, I make the following statements with reference to my views:

(NOTE: Mr. Feidt's comments that follow were assigned to the pertinent parts of the questionnaire by the league, since his comments were contained in his letter without the questionnaire.)

1. (a) to (f) The only governmental agency which should levy a tax on income is the federal government and I favor elimination of the personal property tax.

3. I support abolishment of dedicated funds.

4. Whether cities of the first class should be given added taxing powers should depend upon the type of tax the cities desire to levy.

6. (a) At the last session of the legislature I supported the enactment of the metropolitan transport authority with control vested in the metropolitan communities; (b) A county or metropolitan park system is long overdue.

8. (b) I have consistently supported and worked for the enactment of compulsory state fair employment practices law; (d) I have always supported and will continue to support immediate reapportionment of legislative districts.

HARRY H. KIRCHMAN, 54, 2717 Pleasant avenue. Married, two children. Professional civil engineer. Graduate electrical engineer, BSEE; extension study, civil engineer; extension study, mechanical engineer; extension study, sanitary engineering. Veteran World War I. Member Construction Men's association, Society American Military Engineers, Inter-American Sanitary Engineers.

Supported turnpike and expressway toll roads, non-fluoridation of drinking water, state bonus to Korea veterans.

1. (a) Inasmuch as the state now has 411 million dollars placed in invested funds, of which 73 million dollars is in the idle treasurer's cash, no increase in state income tax is necessary at this time.

(b) At present, it is understood that iron ore taxes are divided so that the state only gets one-quarter, while three-quarters goes to the range country. This should be amended to provide that the state secures an additional one-quarter.

(c) Personal property taxes should be lowered, if possible, as they figure in making a determination of the price of manufactured goods. This naturally places the Minnesota manufacturer and producer at a price-profit disadvantage when competing with industries of other states.

(d) Minnesota gas taxes are already almost as high as other states and justification above one-cent increase cannot be seen unless we desire to bring about "bootleg" gasoline from neighboring states.

(e) An extra two cents per package could be added.

Increased taxation of this item, also in the non-essential class, should be further increased to provide additional revenue to the state, in spite of any objections of the liquor industry's lobby.

(f) Support would be readily given to support expressway or turnpike toll roads which are an immediate necessity to our defense in time of war.

2. (No answer.)

3. No such funds should be placed with general revenue funds for legislative spending, except perhaps in a dire emergency.

4. No, as it uses up sources

Questions Asked of Legislative Candidates

1. What changes in present fiscal policy will you recommend or support in these or other tax programs: (a) state income tax, (b) iron ore taxes, (c) personal property tax, (d) gasoline and motor vehicle taxes, (e) cigaret and liquor taxes, (f) other taxes?
2. If more revenue is needed in the next two years, will you favor increasing present taxes, enactment of a general sales tax or enactment of other new taxes? What new taxes do you favor?
3. Do you favor abolishing dedicated funds, with such revenue going into the general revenue funds to be spent as directed by the legislature?
4. Do you think first-class cities should be given added taxing powers? If so, what type of taxes do you favor?
5. Do you favor increasing basic state educational aids?
6. Do you favor: (a) a metropolitan transit authority to regulate public transportation in Hennepin and Ramsey counties? (b) a county or metropolitan park system? (c) a consolidation of city, village and township relief activities in Hennepin county under the county welfare board?
7. Do you favor replacing the Hennepin county supervisor of assessments with a county assessor who has power to make assessments (neither supervisor of assessments or county assessor would have jurisdiction in Minneapolis)?
8. Do you favor: (a) immediate steps to call a constitutional convention? (b) a compulsory state fair employment practices law? (c) party designation for legislators? (d) immediate reapportionment of legislative districts?

of proposed revenue which might better be left to the states and sometimes results in double taxation against the people.

5. Too much money is being spent for lavish, fancy and non-essential items for the buildings themselves, which in turn take away money to pay for real essentials, such as higher salaries for school teachers.

6. (a) No, until some study has been made of the subject; (b) same answer as (a); (c) Such merging of these activities should result in lower operational costs in spite of a slightly augmented staff which would be necessary under such conditions and should expedite needed actions and relief functions to those who need assistance.

7. Would like to ascertain the reason for such change before any answer.

8. (a) I am rather reluctant at this time to have any changes made during this period of readjustment after war, unless absolutely necessary.

(b) I am a strong believer in fair employment practices for all, regardless of race, color, creed, if such persons are properly qualified through education or experience for the work they seek. In Minnesota all minorities have such equal opportunities now, without any compulsory law to that effect.

(c) In the opinions of various legislators, nonpartisan designation appears to have served a useful purpose over the years but reported public opinion seems to indicate it is time for a change and legislators should abide by public opinion.

(d) Yes, some solution to the present inequities in legislative representation should be worked out at an early date.

CHARLES ST. DENIS, 53, 2600 Portland avenue. Attorney. University of Minnesota.

Minnesota College of Law, BA degree. Merchant marines 1928 to 1933. Member Sons of St. Patrick of Shanghai, China; Fifth and Eighth Wards Republican clubs; Fifth and Eighth Wards Republican organization, vice chairman; Friendly Sons of St. Patrick; Yeomans lodge;

YMCA; Phi Beta Gamma; International Association of Machinists AFL.

Offices held: Minneapolis public library, director 1951-53; Minneapolis Rural Rehabilitation Corp., general counsel three years; Alaska Rural Electrification agent two years—all by appointment.

As library director, petitioned the city planning commission in July 1952 to approve civic center report.

Opposed before the charter commission to bipartisan legislative committee of the city council and the state legislature, a bill which would permit transfer of the power of the annual tax levy from the library board to the board of estimate and taxation.

Active in Republican party.

1. (a) I believe our present income tax rates are high enough.

(b) In view of the newly-opened ore deposits in South America and Ungava range on the Quebec-Labrador border, I believe that for the present there should be no increase in iron ore taxes.

(c) I favor modifying the personal property tax laws towards eliminating inequalities and the discontinuance of household goods taxes.

(d) The federal government should cease collecting taxes on Minnesota gasoline sales, thus permitting the legislature to enact legislation to permit an increased state levy equal to that heretofore paid as a federal tax.

(e) Cigaret and liquor taxes are bearing their just proportion of the tax burden.

(f) Inasmuch as the interim legislative tax committee just has completed its statewide hearings and has not as yet prepared and published its report of findings and conclusions, I feel it best to wait the results of its work and recommendations before attempting to answer this question.

2. If more revenue is needed in the next two years, I am not in favor of increasing present taxes unless it is absolutely necessary, nor am I in favor of enactment of a general sales tax at this time or the enactment of other new taxes.

3. I feel the concept of dedicated funds in most instances is contrary to the basic principles of representative government.

4. I think that first-class cities should be given added taxing powers, subject, however, at all times that such added taxing powers be pre-

sented on the ballot for ratification or rejection by the electorate of the cities.

5. I believe that in many instances increases in state aid for education are justified especially in some of Minnesota's so-called "poorer" school districts. Due to the increased enrollments and costs I favor some upward adjustment in "basic aids."

6. (a) Yes; (b) I favor a county park system, provided that some formula is used for allocation of costs between county and city; (c) Yes.

7. I favor replacing the county supervisor of assessments with a county assessor who has power to make assessments.

8. (a) Yes; (b) I do not feel employment practices that presently exist are so unfair as to require compulsory laws at this time—where unfair situations do arise, we have agencies capable of handling them; (c) Yes; (d) Yes.

SENATOR

35th District

GERALD T. MULLIN, 4314 Xerxes avenue N., incumbent senator, has no opposition for nomination or re-election. He was not asked to complete a questionnaire.

SENATOR

36th District

CARL DEVER, 43, 10308 Lakeview drive W., Minnetonka township. Married. Attorney, six years of college, bachelor of laws degree. Member State Bar association, Hennepin County Bar association, Minnetonka Lions, Toastmaster International. Republican.

Public offices held: chairman Minnetonka township zoning commission two years; director of civilian defense for Minnetonka township two years.

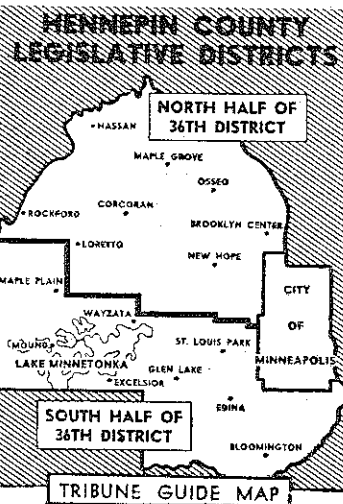
In regard to questions No. 1 and 2, the answer lies first of all in the state legislature and the executive department beginning to operate on the assumption that the taxpayers of the state, both business and private, are not an inexhaustible reservoir from which endless streams of revenue may be tapped to finance additional spending.

It is time to submit to the voters a program of economy designed to permit the state to operate within its present revenue. Therefore, I favor no change in the present tax structure until such a program for economy and efficiency is put into effect.

3. I believe the monies in state trust funds are of such an amount that there is no valid reason to continue building these funds. The dedicated funds should be diverted into general revenue.

4. No—for the same general reasons stated in answer to questions No. 1 and 2.

5. Since the youth of our state are its finest natural re-



source, I favor any program designed for their benefit.

6. (a) Yes—since traffic congestion within the metropolitan area is a common problem it should be met by a common authority; (b) yes—preferably a county park system so that a uniform recreation plan can be fostered before our rapid growth exhausts all the best park sites; (c) yes—this is consistent with the theories of economy and efficiency in that duplication and overlapping is eliminated.

7. I favor replacing the Hennepin county supervisor of assessments.

8. (a) Yes.

(b) I believe in the principle of fair employment. As to how compulsory such a law should be is a matter for consideration.

(c) I sincerely feel the lack of party designation in the legislature is one of the causes for failure to enact progressive legislation.

(d) Yes.

ARCHIE H. MILLER, 4144 Shady Oak road, Hopkins, incumbent senator, did not complete the questionnaire.

JOHN A. MILLER, 5704 W. Thirty-fourth street, St. Louis Park. Married, three children.

Attorney, LLB degree, University of Minnesota. Previous occupations: farmer, road contractor. Navy, 1942-46. Member American Legion, Jaycees.

1. (a) Withholding tax plan by employers and more effective collection of taxes; (b) taconite should continue to receive a tax preference; (c) the inventory taken on May 1 causes inequities in many cases and a system of equalization should be worked out. I favor repeal of the tax on household goods.

2. I believe our entire tax structure needs a general revision.

3. No.

4. No.

5. Yes.

6. (a) Yes; (b) yes; (c) no.

7. No.

8. (a) Yes; (b) yes; (c) yes; (d) yes.

KENNETH TURNHAM, 42, Maple Plain. Married, three children. Farmer. University farm school graduate.

Public office held: justice of the peace five years. Member Hennepin County Farm Bureau, president; Fruit Growers' association, president; Breeders' association, president; Twin City Milk Producers association; Orono Taxpayers' association; PTA, Crystal Bay Men's club.

Supported tax bill—real estate, township incorporation—building code, civil defense. Republican.

1. (a) Could be increased if needed; (b) none at this time; (c) eliminate if proper precautions are taken to maintain local government responsibilities; (d) increased if needed; (e) increased if needed; (f) no comment.

2. Increasing present tax, possibly a public utility use tax could be used.

3. I believe dedicated funds could in many cases be reduced or eliminated.

4. Yes, these should be decided by the people who live in these cities.

5. For the most part yes.

6. (a) Yes, if needed; (b) no, not at this time; (c) no.

7. Yes, providing rural Hennepin county can have an equalization board subject to the county board of equalization.

8. (a) Yes; (b) yes; (c) yes; (d) yes, on a population and area basis.

Representative

Continued from Page Three

REPRESENTATIVE

36th District, North

O. J. (BERT) BRONSTAD, 52, 3411 Winnetka avenue, Crystal, production control manager Munsingwear, Inc. Married, two children. Formerly a farmer. Mayor, trustee and clerk Crystal 16 years, school board member two years. Member PTA, president Rural Hennepin County League of Towns and Municipalities, member Rural Hennepin County Public Nursing committee. President Suburban Recreation association, director Crystal State bank. No party affiliation.



Bronstad

1. (a) Would favor reduction of state income tax if it could be done without decreasing school aids; (b) would favor tax program to encourage expansion of taconite mining process in Minnesota; (c) would support legislation for elimination of personal property tax; (d) would support a tax that would assure adequate construction and maintenance of our state highways; (e) no change; (f) no answer.

2. (a) Would support a program to limit state expenditures to present revenue; (b) none.

3. No.

4. They should be given additional taxing power only if approved by referendum or charter amendment.

5. Yes.

6. (a) No; (b) will support legislation to create a rural Hennepin park authority; (c) no.

7. Favor continuation of local authority of assessors.

8. (a) Yes, provided amendment No. 3 is approved; (b) yes; (c) yes; (d) yes.

FLOYD E. CAMPBELL, 39, 1406 N. One-hundred Forty-fifth street, Plymouth Township. Married, four children. Truck driver. Previous occupation: machine shop. Infantry three years. Member East Parker Lake Improvement association, Teamsters.

1. (a) Should more or less conform to federal laws; (b) could we be overtaxing a good thing? (c) will reserve for further study; (d) leave as they are.

3. Do not favor abolishing dedicated funds, but could be adopted.

5. Yes. New schools are needed in rural communities that do not have enough taxing power to build or support growing trend.

6. (a) Yes, to an extent; (b) yes; (c) no, I believe a neighbor knows the wants better and can control the costs of same better.

7. No.

8. (b) Yes; (d) yes.

ARTHUR S. GERTZ, 61, Maple Plain. Married, two children. Resort owner. Previous occupation: coach, principal, manager. Office held: justice of the peace eight years. Supported bills for Minnesota Game and Protective league. Republican.



Gertz

1. (a and b) Generally speaking, where the question of taxes are concerned, I would consider first of all the welfare of citizens of rural Hennepin county, whom I would represent; (c) this tax should be abolished; (d) would oppose any increase and any

new taxes; (e) distribution satisfactory.

2. How about attempting to live within our income for a welcome change? Favor no new taxes.

3. I do not.

4. I do not.

5. It would be very necessary to convince me that such would be the proper procedure.

6. (a) Certainly not if such supervision applies to rural Hennepin; (b) I would vehemently oppose any encroachment of Minneapolis upon rural Hennepin; (c) Again, I would have to be convinced that it would benefit rural Hennepin.

7. I would labor toward the repeal of the whole setup. It was special legislation designed for the appointment of one individual.

8. (a) Might go along with this, if necessity dictates, but then only if the people themselves have the final decision.

(b) Do not favor any special legislation, as our state and federal constitutions guarantee equal rights to all citizens.

(c) Am most strongly in favor of such legislation and would like to see it include all county offices as well.

(d) Favor that proposition.

ALBERT P. HECHTMAN, 31, Osseo. Married, three children. Insurance salesman. Graduated St. Thomas college, BA degree. Previous occupation: farmer, Army two years. Member American Legion, Jaycees.

1. (a to f) In regard to these taxes I see no need to increase any of these taxes at present.

2. At this writing I do not favor increasing any taxes and feel our tax burden is heavy enough. If needed revenue is required I believe we should study the situation and then enact taxes that will be equal to all. No new taxes.

3. No, I don't feel we should abolish dedicated funds but the amounts should be limited with the balance going to the general fund.

4. No, we have enough taxing powers in the cities.

5. Yes, we should have more aid especially in the heavily populated areas of school children where the need is so critical.

6. (a) No, I believe that it can be regulated at higher levels if done efficiently; (b) park systems are always nice, but if it would increase our tax burden I feel it can be kept on as is; (c) It seems that these are local issues that can best be dealt with the local authorities.

7. No, we should in all ways strive to keep our assessments at local levels.

8. (a) Yes, I think many things are to be done that were adequate years ago.

(b) A qualified no—I believe in fair employment practice laws but not ramming down any employer's throat.

(c) Yes.

(d) I think there are areas especially in the metropolitan area that are under represented and we should be better represented.

STANLEY D. KANE, 417 Turnpike Road, Golden Valley.

Married, two children. Attorney, specialization in municipal law, anti-trust, trade association and motion picture law. BA, MA, LLB degrees. Previous occupation: editor, publisher. Offices held: village attorney Golden Valley, village attorney Champlin, United States government attorney.



Kane

Member Minnesota and Hennepin County Bar associations, Phi Beta Kappa. Do not believe in use of names of clubs, lodges or civic groups in election campaigns, but am a member of many and have held or hold high office in several. Gen-

Questions Asked of Legislative Candidates

(TURN TO PAGE 1 OR PAGE 2 for List of Questions)

eral counsel of North Central Allied Independent Theater Owners and Secretary of National Allied States Association of Motion Picture Exhibitors. Member Hennepin County Municipal Attorney's association and Attorneys Section, League of Minnesota Municipalities.

Supported civic projects in Golden Valley for many years. As village attorney have been interested in all local legislation since 1940. Have worked actively for legislative reapportionment. Independent.

1. (a) Withholding of state income taxes for all except domestics and farm help. Closer check on returns.

(b) Thorough study of iron ore taxation, including reserves, a state iron ore exploration act with idea that the volume of these taxes can and should be increased. Taxation of mineral reservations where they are owned by one other than the owner of the balance of the real estate.

(c) Abolish this tax on household goods.

(d and e) No increase.

(f) Oppose a sales tax. Consider a pulpwood tax at the manufacturing end, not on the grower or cutter. Repeal constitutional limitations on certain types of taxation.

2. Will oppose increasing taxes or enacting a general sales tax, or any type of sales tax, and would work for other new taxes as suggested above, if necessary. (a) Answered under (1) above.

3. No.

4. No. If they need additional taxes they should themselves increase millage rates or ask the legislature to do so for them. They should share in the gross earnings tax.

5. Yes.

6. (a) Yes; (b) yes; (c) no.

7. No.

8. (a) Yes; (b) yes; (c) yes; (d) yes.

LEONARD E. LINDQUIST, 41, 6940 W. River Road, Brooklyn Center. Married, three children. Attorney, Larson, Loevinger, Lindquist, Freeman and Fraser. Graduate University of Minnesota. BSL and LLB degrees. Previous occupation: construction worker. Navy 1942 to 1946. Railroad and warehouse commissioner 1949 to 1952; state and federal labor arbitrator and mediator, national six years, state four years; attorney office of price administration, attorney national labor relations board.



Lindquist

Member PTA, Hennepin County and Minnesota State Bar associations, Good Government league.

Supported charter reform, school bond proposal, metropolitan transit authority. Republican.

1. (a) This is a fundamentally sound tax; (b) iron ore should be specially taxed so that Minnesota ore can compete on the market; (c) every effort should be made to make it unnecessary to tax personal property; (d) should be comparable with other states; (f) same as (d).

2. I prefer studying the report of the interim committee on taxation before taking a stand.

3. Yes, generally, but there may be special situations where dedicated funds are appropriate.

4. Yes, my further comment on this must await the report

of the interim committee on taxation.

5. Yes, to the extent necessary to assure adequate educational facilities throughout the state.

6. (a) Yes; (b) yes; (c) I am giving this matter further study.

7. I am investigating this question.

8. (a) Yes; (b) yes; (c) yes; (d) yes.

E. J. (DICK) PARISH, 40, 4101 Quail avenue, Robbinsdale. Married, four children. Attorney, BA and LLB degrees. Navy 1944-46. Offices held: School board district #24, five years, chairman 1952. Member Hennepin County and State Bar associations, Veterans of Foreign Wars, American Legion, Robbinsdale Business Men's association.



Parish

1. (a) Abolish the provision which requires a taxpayer to pay \$5 on the bonus tax even though no tax due.

(c) Eliminate it insofar as it functions as a tax on personal property in the home.

2. No sales tax in any event. We don't need any new or more taxes.

3. No.

5. Yes.

6. (a) If adequate representation is given the suburban areas upon the basis of population.

7. No. Why sort out one area of the county?

8. (a) Yes; (b) yes; (c) yes; (d) yes.

AL T. WENTWORTH, 54, 187 Peninsula road, Medicine Lake. Married, one child. Teacher, Minneapolis College of Music. Office held: mayor of Medicine Lake village, 1950 to present; assessor, 1948 to 1950. Member Zuhrah temple, M'makers.



Wentworth

Wentworth did not answer the questions on issues.

E. H. (ED) SWANSON, 3504 Zane avenue N., Crystal, did not complete the questionnaire.

REPRESENTATIVE

36th District, South

ALF L. BERGERUD, 55, 5100 Ridge road, Edina. Married, four children. Vice president and counsel, Red Owl Stores, Inc. Graduated University of Minnesota, LLB degree. Previous occupations: stenographer, clerk of probate court, practicing lawyer. Navy one year. Public office held: state representative, 12 years, incumbent.



Bergerud

Member Minneapolis Chamber of Commerce, Minnesota Retail federation, Northwest Chain Store council, Minneapolis University club, Interlachen club, Minneapolis Kappa Sigma Corp., Phi Alpha Delta fraternity, Hennepin County, Minnesota and American Bar associations.

Supported numerous measures in the legislature including cigarette and liquor tax sharing for municipalities, reapportion-

ment bill, rewrite workman's compensation act increasing benefits for working people, revised unemployment compensation act increasing benefits for the employed. Republican.

1. (a) No increase. (b) As member of interim iron ore tax commission, must await final report due at end of this year before determining my course. Tax law on taconite must be revised and strengthened to encourage this industry. (c) Repeal if replacement can be found; otherwise, attempt to eliminate state tax, leaving this tax to the municipalities.

(d) No increase. (e) No increase.

(f) Attempt the revision of the assessment on real and personal property so as to eliminate discrimination.

2. If more revenue is required, then there must be a general over-all increase in taxes; however, spending must be kept within the state's income. Favor no new taxes.

3. This question covers too much territory, thus cannot be fully answered here. I am not ready to release the income tax from being allocated for school aids exclusively, and I am not favorable to unallocating fishing and hunting licenses from the department of conservation.

4. No—although not representing any cities of the first class, this is a local problem.

5. I am favorable if revenue will permit it.

(a) No.

(b) I am unable to answer without more information, and I am particularly tax-conscious on these matters.

6. (a) No.

7. Yes.

8. (a) Yes; (b) no—but favorable to a voluntary method on a trial basis, with consideration of compulsory status after a few years on trial; (c) yes; (d) yes.

HENRY H. FEIKEMA, 27, 2701 Monterey Avenue, St. Louis Park. Married, no children. Attorney. University of Minnesota, LLB degree. Army two years. Member Minnesota and Hennepin County Bar associations; Delta Theta Phi fraternity. Democratic-Farmer-Laborite.



Feikema

(1) (a to e) continuance; (also b) reappraisal to determine fairness of present basis.

2. Do not favor enactment of a general sales tax. Believe stronger consideration should be given to the ways in which present revenues are being spent.

3. No.

4. No.

5. Yes.

6. Yes, but should make a thorough examination of the costs and overlapping of work involved; (b) metropolitan; (c) consolidation would, if organized properly, tend to decrease the cost to the people of the area.

7. No opinion.

8. (a to d) Yes.

JOHN HINES, JR., 37, 722 Drillane, Hopkins. Married, one child. Business owner—Story Book Baby club. Army, five years. Democrat.



1. (a) No. New tax money should be derived by means other than a sales tax.

(b) Increased. Hines

(c) Elimination of the inequitable personal property tax on household goods.

(d) If new highway taxes are needed they must come from this source.

(e) If new taxes are needed they could be derived from these sources. It will be up to

to choose between the
of a sales tax or horse

in favor of collecting
state income tax from
pay little or no taxes
e.

lish a limit on dedi-
als.

especially for junior
who now receive no
thatsoever.

es; (c) yes under the
fare board.

d b) yes.

e main issue of this
is that of party desig-

pportionment should
plished by constitu-
vention.

JEPPENSEN, 63, Glen
married, one child. Civil
and surveyor. Public
office held:
school board, Glen
Lake, five
years; town
board, Minne-
tonka township,
ten years; Hen-
nepin county
commissioner,
four years.

Supported zon-
ing Minnetonka
township.

Democrat.

OK; (b) OK; (c) Re-
OK; (e) OK—increase
necessary.

increase. (a) None!

It is high time we be-
nk in terms of spend-
and less and less.

until a thorough study

Yes; (b) yes; (c) no.

Yes; (b) yes; (c) yes;
y all means. Now at
ession.

at down senate and
bers and have a sin-
such as Nebraska.
at many boards and
that are not at all

D. J. SWANSON, 47,
ale avenue. Married,
dren. Machinist in-
Member Honeywell lo-
Minnetonka civil de-
national
for Paraly-
Shore
l Fish
ported
elfare
games,
solicin
iron
general
Demo-
rmer-

H. Swanson
, c) Before comment-
fiscal policy or other
ms, I would first have
he report that is now
ulated by the interim
ission.

e) No increase.
e as (a).

definitely opposed to
sales tax, or the en-
f any new tax.

is a serious problem,
merits considerable
d consideration. But
e other means has
ved that will assure
dequate funds will be
for the education of
en in the future, I do
abolishing dedicated

st sessions the legis-
s given the cities of
lass additional taxing
hat have not been

increasing the basic

Favor; (b) I would
vory this before mak-
omment; (c) No.

eve a study should be
onsider the possibility
wide assessment pro-

es; (b) yes; (c) yes;
tely.

60 in County Vie for 18 Seats in Legislature

By **JOHN C. McDONALD**
Minneapolis Tribune Staff Writer

Sixty candidates are scrambling for the 18 seats belonging to the Hennepin county delegation in the Minnesota house of representatives—two seats in each of nine districts.

Of the 60 aspirants, 13 will be nominated without contest in the 29th, 30th, 32nd and 35th districts. Their names will not appear on next Tuesday's primary ballot. All face opposition in the Nov. 2 general election.

Four will be nominated in each district (if there are that many candidates competing) from the 28th through the 35th. Two each will be nominated in the north half of the 36th district and in the south half.

The Citizens League of Greater Minneapolis asked the candidates for biographical information and for their stands on eight issues important to Minnesota citizens. Their answers, numbered in the same sequence as the questions in the box on this page, follow:

REPRESENTATIVE 31st District

JAMES L. (JIM) ADAMS, 32, 209 E. Nineteenth street. Married, no children. Electrician for municipal building commission.

Army engineers three years. Member American Legion, Veterans of Foreign Wars, Stenbock Swedish lodge, local 292, AFL, IBEW.

Supported public safety amendment, school amendment to increase mileage. Democratic-Farmer-Laborite.

1. (a) Our state income tax is a fair tax, because it is based upon the ability to pay theory and should be continued on this basis. I am against any increases in this tax and also feel that a larger exemption should be provided for each dependent.

(b) I feel the iron ore taxes could be increased so that the iron ore industry will bear its fair share of the entire tax burden of our state.

(c) I oppose elimination of this tax, but I feel certain amendments would eliminate injustices and inequities.

(d) I feel the gasoline and motor vehicle taxes should not be increased at this time.

(e) I do not favor increases in cigaret and liquor taxes.

(f) I definitely oppose a general sales tax because it strikes hardest at the people least able to pay it.

2. I oppose raising more revenue by enacting a general sales tax, but I do feel additional revenue can be obtained by the revising of our state constitution. In doing this the gross earnings tax rate can be changed (which has not been done since 1913) and the railroads could then pay their fair share of the taxation burden.

I feel new taxes should not be proposed until the report being prepared by the Minnesota tax study commission has been presented to the legislature and thoroughly studied.

3. Dedicated funds were established by a referendum vote and the question of abolishing these funds logically should be decided in the same manner.

4. Yes. First-class cities should be given added taxing

Questions Asked of Legislative Candidates

The Citizens League of Greater Minneapolis asked each legislative candidate the following questions. Their answers are numbered in the same sequence as the questions.

1. What changes in present fiscal policy will you recommend or support in these or other tax programs: (a) state income tax, (b) iron ore taxes, (c) personal property tax, (d) gasoline and motor vehicle taxes, (e) cigaret and liquor taxes, (f) other taxes?

2. If more revenue is needed in the next two years, will you favor increasing present taxes, enactment of a general sales tax or enactment of other new taxes? What new taxes do you favor?

3. Do you favor abolishing dedicated funds, with such revenue going into the general revenue funds to be spent as directed by the legislature?

4. Do you think first-class cities should be given added taxing powers? If so, what type of taxes do you favor?

5. Do you favor increasing basic state educational aids?

6. Do you favor: (a) a metropolitan transit authority to regulate public transportation in Hennepin and Ramsey counties? (b) a county or metropolitan park system? (c) a consolidation of city, village and township relief activities in Hennepin county under the county welfare board?

7. Do you favor replacing the Hennepin county supervisor of assessments with a county assessor who has power to make assessments (neither supervisor of assessments nor county assessor would have jurisdiction in Minneapolis)?

8. Do you favor: (a) immediate steps to call a constitutional convention? (b) a compulsory state fair employment practices law? (c) party designation for legislators? (d) immediate reapportionment of legislative districts?

powers. It has been suggested that first-class cities be given the power to tax railroad and hotel property in the cities. However, this taxing power would be under the jurisdiction of the city council and decisions to levy taxes would rest with that body.

5. Yes. I favor increasing basic state aids to elementary and secondary schools and also providing state aid for junior colleges.

6. (a, b, c) Yes.

7. Yes.

8. (a) Yes.

(b) A fair employment practices law should be enacted. (c) Party designation for legislators should be enacted so that legislators can be held responsible for the platforms they campaign on and for.

(d) Legislative districts definitely should be reapportioned.

MILTON F. BUDDE, 57, 505 S. Eighth street. Married, no children. Newspaperman. Two years of law school. Previous occupation; resort owner.

Supported old age, street and park, youth centers, new city hospital, library, improved tourist trade. Independent affiliation.

1. (a) Better enforcement; (b) no change; (c) no change now; (d) no change now; (e)

no change now.

2. No sales tax.

(a) This must be decided as the picture unfolds.

3. No.

4. No.

5. Yes — blind, handicapped, etc.

6. (a) No; (b) yes; (c) no.

7. Yes.

8. (a) Yes; (b) yes; (c) no; (d) yes.

CARL G. HAGLAND, 55, 1913 S. Sixth street. Married, no children. Building tradesman. One year of college. Previous occupation: labor leader. Public office: state representative, 18 years, incumbent. Member AFL, South Side Business Men's association, Eagles, Masons.

Supported old age assistance and all other social legislation, unemployment insurance, workmans compensation, public housing, fair trade law for business, mental health, highway safety laws, increased school aids, pensions for public employes.

1. (a to f) These questions are difficult and practically impossible to answer at this time, because nobody knows now what financial position these funds will be in until the legislature meets in January 1955.

But as a general statement I am opposed to any increase in the income tax unless it is necessary for school aids. I believe iron ore taxes could be increased.

I favor abolishment of personal property tax on household goods. I oppose any increase in the gasoline, cigaret and liquor taxes. I favor abolishing the tax on real estate by the state.

2. I am and always will be opposed to a sales tax.

(a) None.

3. No.

4. No, the legislature has given them certain taxing powers and they have not used them. I believe the cities should receive some of the gross earnings tax money paid by the utilities and railroads which practically all goes to

Minneapolis Morning Tribune

PART 4

Voter's Guide

Prepared with the assistance of the
Citizens League of Greater Minneapolis

Minneapolis, Minn., Saturday, Sept. 11, 1954

the state, also abolish the tax on gasoline used by city owned vehicles.

5. Yes, if necessary.

6. (a) Yes; (b) no; (c) No.

8. (a) Yes; (b) yes; (c) yes; (d) yes.

GARY D. HIBBING, 22, 2109 S. Fifth street. Single. Riveter, American Bridge. Previous occupation: truck driver. Marines three years. Member Steelworkers union. Democratic-Farmer-Laborite.

1. (a) Raise exemptions for wage earners; (b) increase if possible; (c) abolish personal property tax; (d) none; (e) none; (f) open to question.

2. Anything but a sales tax. (a) Open to question.

3. Yes.

4. Yes. Greater share of state funds.

5. Yes.

6. (a) Yes; (b) yes; (c) yes.

7. No.

8. (a) Yes; (b) yes; (c) yes; (d) yes.

LEONARD J. MIKULAY, 617 Twenty-first avenue S., did not complete the questionnaire.

RICHARD A. PALMER, 49, 2106 Third avenue S. Salesman. Air force three and one-half years. Member American Legion, Enlisted Veterans club, Townsend Pension club, Carpenters union, caretakers and janitors union.

Supported pension bill, security bill, lien law. Democratic-Farmer-Laborite.

1. (a) Yes; (b) yes; (c) yes; (d) yes; (e) yes.

2. As judgment is needed.

(a) None.

3. Yes.

4. No.

5. Yes.

6. (a) Yes; (b) metropolitan system; (c) yes.

7. Yes.

8. (a) Yes; (b) yes; (c) yes; (d) yes.

W. R. (AL) WILSON, 63, 1829 Riverside avenue. Widower. Contractor, Wilson decorating Co. Army six months. Member: Masons, Eagles, Painters local, American Legion, Labor's League for Political Education. Democratic-Farmer-Laborite.

1. (a) Should not be increased but other means of tax revenue should be created. (b) could be increased. (c) I stand firmly against taking property away from old-age pensioners. It's almost criminal to take their life savings on which they

4 Districts Lack Vote Contests

Information on candidates for state representative in the 28th district was published in Thursday's Voter's Guide. There are no primary contests in the 29th, 30th, 32nd and 35th districts.

have paid taxes for years. (d) Gasoline and motor vehicle taxes should be separated and gasoline tax left as is. But motor tax on buses and trucks should be increased. (e) Should be left as is.

2. I oppose a sales tax. (a) Trucking and transportation a higher tax as they really tear up the highways.

3. I favor that revenue funds be spent by the legislature as it sees fit.

4. First-class cities should be given added tax powers when the need comes and I firmly believe public utilities, trucking and transportation companies should stand most of it.

5. No.

6. (a) Yes; (b) county; (c) I am much in favor, yes.

7. Yes.

8. (a) Yes; (b) yes; (c) yes; (d) continue as is.

REPRESENTATIVE 32nd District

The three candidates will be nominated without contest. Their names will appear on the Nov. 2 general election ballot. **HERMAN J. KORDING** and **EDWARD J. (EDDIE) VOLSTAD** are the incumbents who will be faced by **WILLIAM (BILL) WATKINS**.

REPRESENTATIVE 33rd District

HAROLD J. ANDERSON, 44, 4919 Colfax avenue S. Married, two children. Lawyer, Anderson & Nehls. LLB degree. Previous occupation: special agent FBI. Office held: state representative two terms, incumbent. Member Aquatennial association, Minneapolis Chamber of Commerce, Elks.

Supported reapportionment, lobbyist registration, many of Little Hoover committee recommendations, Hennepin county and Minneapolis legislation. Republican.

1. (a to e) We should not increase any present taxes. Any increase would affect adversely our chances of inducing new industries to move into our state or retaining our present industries.

I do not believe in the personal property tax. If we retain it, we must insure more uniform assessment of real and personal property.

I firmly believe the heavy users of the highways should pay their fair share of gasoline and motor vehicle taxes. Taxes on liquor and cigarets have reached their maximum.

(f) It is difficult to give an opinion on other taxes until the full needs of the state are presented. I oppose more taxes.

2. I do not believe I can answer this question fairly without thoroughly examining the budget requests and needs of the state government. (a) None, if we can avoid it.

3. I presume you mean funds now dedicated by the constitution. In which case, the voters should be given an opportunity to vote on this matter by constitutional amendments submitted.

Representative
Continued on Page Two

Representative

Continued from Page One

ted to the people. I feel present sums in the various trust funds should be kept intact.

4. I oppose any taxes whereby city merchants would be discriminated against by merchants outside city limits as in the case of a city sales tax.

5. Any increase in the basic state educational aids will mean an increase in the income tax rates or a supplementation by other state revenues.

6. (a) I was one of the authors on the original bill in the last session; (b) yes; (c) yes—providing the present employees are protected in their rights providing a transfer and consolidation is made.

7. Yes.

8. (a) Yes, I supported such steps in last two sessions; (b) I supported such legislation in last two sessions; (c) yes; (d) yes.

ERNEST (JIGGS) DONAGHUE, 3305 Longfellow avenue, did not complete the questionnaire.

BERNARD E. ERICSSON, 62, 3628 Chicago avenue, Single. Publishing business, Gazette Publishing Co.; also landscaping Ray E. Keyes. Previous occupation: manager editor, publication, Navy seabees, 2 years. Public office held: library board director. Member Commonwealth club, American Legion, T. C. Veterans, Veterans federation, Seabee association.



Ericsson

Supported payment of back taxes on installment plan, selection of proposed new library site, reopening of library on Saturday. Republican, sometimes Democrat.

1. (a) Favor a larger exemption and repeal of so-called "bonus tax."

(b) Certain allocation would be justified—to be allotted for certain uses or political units.

(c) Many homeowners do not own personal property on which they pay taxes. Certain changes needed.

(d) Stop wasting money as was done on Wayzata boulevard between Minneapolis and Wayzata.

(f) Make every effort to eliminate unneeded public services. Make tax money do more.

2. A general sales tax would be a nuisance tax, just another tax to pay and spend. (a) Tax municipal liquor stores to death.

3. Put a time limit on dedicated funds or a certain percentage might be allocated to general fund.

4. Oppose a "so-called" Minneapolis income tax proposal. Portion of gross earnings tax should be reallocated.

5. To help our school finances, a study should be made of a three-semester year.

6. (a) It would be fair to give regulation of public transportation in metropolitan areas to public officials in such areas; (b) at present I am not in favor of a county (metropolitan) park bureau; (c) if it can be shown such consolidation would be just, efficient and economical, I would favor it.

7. Job or office of supervisor should be abolished. Why have a county assessor if Minneapolis is to be left out?

8. (a) If the setup or makeup of a constitutional convention is O.K., it would be justified; (b) employers should have the right to hire on a basis of merit; (c) If we are to limit it to legislators—then why not include other public officials; (d)

Questions Asked of Legislative Candidates

The Citizens League of Greater Minneapolis asked each legislative candidate the following questions. Their answers are numbered in the same sequence as the questions.

1. What changes in present fiscal policy will you recommend or support in these or other tax problems: (a) state income tax, (b) iron ore taxes, (c) personal property tax, (d) gasoline and motor vehicle taxes, (e) cigaret and liquor taxes, (f) other taxes?
2. If more revenue is needed in the next two years, will you favor increasing present taxes, enactment of a general sales tax, or enactment of other new taxes? What new taxes do you favor?
3. Do you favor abolishing dedicated funds, with such revenue going into the general funds to be spent as directed by the legislature?
4. Do you think first-class cities should be given added taxing powers? If so, what type of taxes do you favor?
5. Do you favor increasing basic state educational aids?
6. Do you favor: (a) a metropolitan transit authority to regulate public transportation in Hennepin and Ramsey counties? (b) a county or metropolitan park system? (c) a consolidation of city, village and township relief activities in Hennepin county under the county welfare board?
7. Do you favor replacing the Hennepin county supervisor of assessments with a county assessor who has power to make assessments (neither supervisor of assessment nor county assessor would have jurisdiction in Minneapolis)?
8. Do you favor: (a) immediate steps to call a constitutional convention? (b) a compulsory state fair employment practices law? (c) party designation or legislators? (d) immediate reapportionment of legislative districts?

This is an old issue—I favored it back in 1922.

TIMOTHY T. FLYNN, 46, 1550 E. Minnehaha parkway. Married, eight children. Attorney, LLB degree. Previous occupation: transportation consultant. Member Traffic Club of Minneapolis, Hennepin County Bar association, Minnesota State Bar association, American Bar association.



Flynn

Supported domestic relation legislation.

1. to 4. Present tax structure of the state should be subject to a careful analysis in order to determine whether or not a fair and equitable plan is being used in the collection of tax monies and in their use and distribution.

I do not believe under our present system that tax monies collected by the state are allocated and distributed in uniformity with the object of the legislation for which the taxes are assessed.

5. Yes.

6. (a) No—railroad and warehouse commission is sufficient authority to regulate transportation; (b) yes; (c) no—local people are more adapted to handle the problems.

7. I cannot answer without more information.

8. (a) Yes.

(b) It depends upon the wording of the statute and what you mean by "compulsory." I feel an employment practices law should be passed that is non-discriminatory, but an employer should not be deprived of the right of selection.

(c) No; (d) yes.

GEORGE A. FRENCH, 53, 5140 Penn avenue S. Married, two children. Attorney, graduated University of Minnesota, LLB degree. Public office: state representative, 14 years incumbent. Member governor's safety council, Lions, Republican organizations, Masons, Minneapolis Athletic club, Minneapolis Auto club.



French

In each of the past sessions I have been author of 20 or more important laws, including

laws relating to tax reduction, youth conservation, public welfare, civil defense, industrial relations and the department of business, research and development for the small businessman. Republican.

1. (a) I would favor some reduction if it can be worked out without injury to school aids.

(b) Care must be taken to keep from destroying our mining industry by unwise tax policies and from losing what taxes we now collect, in view of discovery and development of high-grade Canadian and South American ores.

(c) I would like to see this abolished, as it is injurious to business, but most of the revenue goes to local government, and some replacement tax must be found.

(d and e) No change.

(f) None.

2. I favor keeping appropriations within the revenue from existing taxes. (a) None.

3. No—these funds are the state's "savings account." They are accumulated for our schools and are designed to replace our natural resources which, when gone, will produce no more taxes.

4. If the people want the city to have added taxing power, they can give it to the city by charter amendment.

5. That depends on the status of the income tax school fund when the legislature meets.

6. (a) I introduced a bill to this end last session.

(b) We have a good park system in Minneapolis that our residents have paid for. If our park system is absorbed into a county system, then our residents will be called again to pay for the development of parks outside the city.

7. Minneapolis has an excellent assessor and assessing system. What is to be done in rural Hennepin county is for them to decide upon.

8. (a) I am the author of amendment No. 3, upon which the voters will vote this fall. It insures that the people will have the right to vote upon the adoption of such constitution as the convention might write. Without it, they would have such right only if the convention gives it to them. If it passes, I would favor a constitutional convention.

(b) I voted in favor of the one presented in the 1951 and 1953 sessions.

(c) I voted in favor of it the last sessions, and have been

author of the bill at one or two previous sessions.

(d) Yes.

WILLIAM B. GRAHAM, JR., 43, 5115 Nicollet avenue, Married, two children. Electrical construction foreman, Northern States Power Co. Completed three years of Electrical Engineering college. Previous employment: International Business Machines Corp. Member IBEW, CLU.



Graham

Supported mental health program. Democratic-Farmer-Laborite.

1. (a) None—may be necessary in upper middle bracket and to close loopholes; (b) increase to use for Iron Range resources rehabilitation funds; (c) reform to eliminate inequities in exemptions; (d) should be so applied to give better return to road user; (e) none; (f) I would fight sales tax or manufacturers' excise tax applied as a sales tax.

2. Increase present taxes.

3. No.

4. Yes—something must be done to help first-class cities in financing. There must be a better return to the cities from the present tax structure.

5. Yes to \$100.

6. (a) Yes; (5) county system; (c) yes.

7. Yes.

8. (a) Yes; (b) yes; (c) yes; (d) yes, my own 33rd district is an example.

ERNEST A. LA SALLE, JR., 28, 4513 Fifteenth avenue S., insurance agent supervisor Midland National Life Insurance Co. Married, two children. Two years college, two years navy. Member Jaycees, American Legion, VFW, DAV, Kiwanis, YMCA, Elks. "Republican on some issues, Democrat on others."



La Salle

1. (a) I will support the withholding by employers of the portion of taxes due the state.

(b) This industry should pay its fair share of taxes.

(c) I favor greatly reducing or eliminating this tax.

(d) I favor a ton-mile tax for very heavy over-the-road equipment.

(e) They should both be increased, as this is a large source of revenue for the state.

(f) Industry should receive some relief on its heavy tax load.

2. A general sales tax is the only fair method of equal distribution of the tax load. (a) Ton-mile tax, to raise the necessary funds needed to improve state highways.

3. No. These funds were set aside for a designated purpose, and they should continue in this vein.

4. Yes. More liberal annexation powers should be given to first-class cities, also control of liquor licensing more liberal, thereby reducing a premium payment for purchase of same.

5. Yes. I favor this aid very much, for only with the proper funds necessary to educate our youngsters, how can we hope to have a brighter future for our families?

6. (a) Yes, this is of utmost importance; (b) a metropolitan park system is the better of the two; (c) yes, thereby enabling the county to share in this project, rather than just the city or townships.

7. Yes, I think that this is a step in the right direction.

8. (a) Yes. This is long over-

due and would benefit all concerned.

(b) Very much so.

(c) Yes.

(d) Yes. I also favor greatly reducing the number of elective offices in the legislature and the senate.

BRUCE SMITH, 37, 5430 Pillsbury avenue. Married, two children. Manufacturers agent, Harry P. Smith Co. BA political science. Navy three years. Member Minneapolis Chamber of Commerce, North Central Electrical Manufacturers club, National Municipal league, Citizens league. Supported Minneapolis charter reform. Republican.



Smith

1. (a) Would leave the tax rates and deductions as they are if the demands for additional school aid per pupil are to be met.

(b) No change.

(c) Continue as is with four changes: elimination of personal property tax on household goods, reduction in the classification of the tax as applied to business inventories to 15 per cent full and true value, use of monthly average inventory instead of the amount on hand May 1 as a basis for assessing, removal of the state from the personal property tax field.

(d) Any increase would be dependent on what demands are made for increased trunk and secondary roads.

(e) Favor an increase in tax on these commodities to offset reductions suggested in other taxes.

2. The answer is not necessarily either of the three alternatives listed. Savings in state expenditures through adoption of the vast majority of Little Hoover commission recommendations might obviate the need for increased revenue to some degree. If this is not possible I favor increases in existing taxes as a solution.

3. Favor the establishment of a ceiling on some dedicated funds, the remainder then to go to the general revenue fund.

4. Yes, if not now enabled by the legislature.

5. A question which requires careful consideration by the legislature. With continued attendance growth, continued development and need for adequate curriculum and programs and continued need for adequate teachers salaries, it requires an increase in the basic aid. Voters have to realize this means increased rates on existing taxes or else new tax sources to keep a balanced state budget.

6. (a) Yes; (b) yes; (c) yes.

7. Yes.

8. (a) Yes; (b) yes; (c) yes; (d) yes.

ROY W. TRUELSON, 5726 Clinton avenue, did not complete the questionnaire.

REPRESENTATIVE 34th District

DAN BRENNAN, 35, 2108 Kenwood parkway. Married, three children. Publicist, Minnesota Mining & Manufacturing Co. Graduated University of Minnesota, BA degree. Previous occupation, journalist. Air force six years. Public office held: secretary to mayor. Member Air Force association, Authors League of America, British Authors society, Ameri-



Brennan

can Legion, Disabled Veterans.

As secretary Minneapolis I many civic gring a wide ran bills, civic prnances. Republi

1. (a) Minne already high at Should not be

(b) I believe reveal they ca somewhat.

(c) It should reduced.

(d) No incre cause they are upper quarter

(e) No incre (f) Public ut barge lines tax viewed.

2. I do not be are needed. Ec ernment can t greater efficien

3. Only those be dedicated wh related to the which they are

4. Minneapolis provides means taxes.

5. Only as th demonstrated.

6. (a) Yes, it the rightful au cities; (b) yes, shown; (c) ren from the city i and city from co

7. Yes, becaus under present thority.

8. (a) Yes; (b) (d) yes.

RUTHERFORD BURR, JR., 26, avenue S. Single rector, Burr m degree, Univers sota. Air force half years. Men Theta frater Jaycees, A. F. & Supported cou choice of either audit by CPA's sion to study m new business an nesota.

1. (a) No incr er effort made t (b) no incre crease would k competitive with ing ore centers; ventories is inju business; (d) no change.

3. I have part lic audit of one and three scho have found that ishment of dedi impossible.

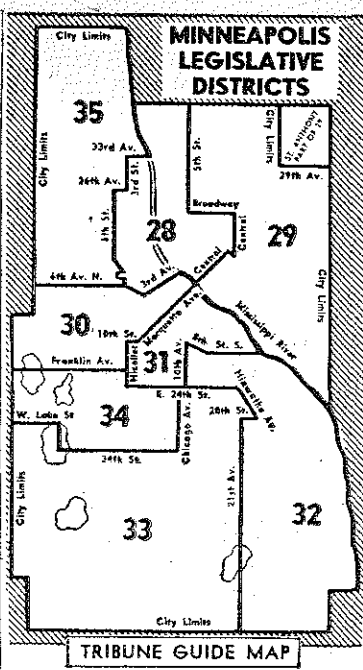
5. I would like but without ada taxes.

6. (a) No; (b)

8. (a) Only al constitutional c yes—every citi equal opportuni of race, creed or (d) yes.

LYMAN WAI 32, 2616 Third a ried, no childr financing, Kall man & Co., Inc. Duties: Buy and sell municipal bonds, enabling m u n i c i p a l i t i e s and school districts to build water and sewer systems, street i m p r o v e m e n t s , c o u r t h o u s e s , s c h o o l s and other m u n i c i p a l e n t e r p r i s e s . Army World W 52.

Member Veter Wars, Armed F association, Re association, Elks City Bond club, ciation for A Science, Minne sation, Minn



of Fine Arts, Executive Club of Minneapolis.

Supported various Jaycee civic improvement committee projects. Democratic-Farmer-Laborite.

1. (a) Hold at present level until a clear picture of our tax structure results from thorough study; (b) retain at present levels—our iron ore industry must be kept flourishing and healthy; (c) ineffectual, should be eliminated; (d) should be increased; (e) should be held at present levels; (f) an exhaustive study of our entire financial structure must be made, and definitive action taken in the next two years.

2. A thorough reorganization of state government should result in economy of operation. and taxes would not have to be increased. But if such were necessary, I would be opposed to a sales tax unless all other possibilities were exhausted.

3. Yes the legislature's hands should not be tied. The legislature should be allowed to use all revenue for purposes as needed. However, the needs of our educational system should still occupy an important place in the allocation of revenues.

4. Yes.

5. Yes, the effective education of our youth is our stake.

6. (a) Yes; (b) yes; (c) yes.

7. I have not studied this question sufficiently to form a considered opinion.

8. (a) Yes; (b) yes; (c) yes; (d) yes.

THOMAS F. COSTELLO, 68, 3212 Chicago avenue. Married, two children. Retired, worked for R. E. A., Inc. Previous occupation: state timber scaler.

I favor all good social and factory laws and I oppose all anti-labor and anti-social laws. I always have favored small games like bingo and 14 and would legalize 14. Liberal.

1. (a) Would not change income tax law; (b) open mind on iron ore; (c) would repeal or make it uniform to cover everybody; (d) cities should get a larger share of tax; (e) every cent of liquor tax should be returned to point of origin.

2. Do not favor increasing taxes. opposed to general sales tax.

3. I am not in favor of abolishing dedicated funds. I would consider placing ceiling on such funds.

4. Yes, I believe that first-class cities should share in gross earnings tax and should have power to tax all property within their limits.

5. Yes, I favor aiding education in every way possible.

6. (a) Yes. The two counties can solve this problem and without outside help.

(b) We have a beautiful park

system. Would help county as much as possible.

(c) Each community should control its own relief. Others are not interested.

7. No comment. Would have to study matter.

8. (a) No, I favor revision by amendment same as now.

(b) I favor a fair employment law without any discrimination as to race or creed based on ability to do the job and on a seniority basis; (c) yes; (d) yes, the sooner the better.

DANIEL WEBSTER HARDING, 706 W. Twenty-sixth street, did not complete the questionnaire.

CLARENCE W. HINCK, 64, 2720 Drew avenue S. Married, one child. President and general manager, Hinck Flying Service. Served four years naval aviation. Member National Aeronautical association, president; Aviation Trades association, president; American Legion, Forty and Eight.



Hinck

1. (a) More liberal deduction program; (b) present iron ore sufficient, but should be reduced in the near future; (c) more stringent method of collection, or abolished; (d) gas, motor vehicle tax should be used statewide inasmuch as it is a statewide program; (e) present tax program accepted; (f) the replacement of state income and personal property tax, with sales tax to provide equal taxation.

2. Present taxes as high as should be. In favor of new tax similar to general sales tax if needed. Favor general sales tax.

3. Dedicated funds were set aside for a purpose, and should be used same.

4. Only if it will benefit the people in the area taxed.

5. If a need, I would be in favor.

6. (a) Yes, I believe the authority is emphatically needed to regulate the abused systems in Hennepin and Ramsey counties; (b) favor a county park system for use of the county involved; (c) yes, there should be distribution from a central office.

7. Yes, only because I believe there is a duplication of jobs.

8. (a) I favor a survey or investigation of the Little Hoover commission; (b) favor a state fair employment law; (c) there is no need for party designation; (d) yes.

GEORGE R. JOHNSON, 3332 Nicollet avenue, did not complete the questionnaire.

JAMES L. JONES, 46, 1012 W. Thirty-fourth street. Married, two children. Realtor. James L. Jones Co. University graduate, BSC in business administration.



Jones

1. (a) Will try to secure better law enforcement in order that the taxpayer may be made to carry his share of the load; (b) no change.

(c) Eliminate the tax as to household goods, as it doesn't produce much net return. Although this tax draws a lot of fire as a nuisance, it does provide a considerable revenue.

(d) No change; (e) no change; (f) none.

2. I do not believe more revenue should be needed, and feel the state government must be operated within its budget, with more attention to economy and efficiency. (a) none.

3. I do not favor abolishing dedicated funds with such rev-

enue going into the general revenue funds.

4. No.

5. Yes.

6. (a) Yes. (b) Metropolitan park system. (c) No.

7. Yes.

8 (a) Yes.

(b) I believe in fair employment practices, but in my opinion the compulsory part of such a law would simply defeat the goal to be accomplished.

(c) This would be a good thing, as it would help screen candidates and produce a more desirable class of candidates.

(d) Certainly reapportionment is needed.

GLENN D. McCARTY, 40, 2701 Grand avenue S. Married, no children. Attorney, University graduate, BA and JD degree. Previous occupation insurance examiner. Army two years. Member Lions, Boy Scouts, American Legion, Minneapolis Program club, State University of Iowa Alumni association, Hennepin County and State Bar associations.



McCarty

Supported Sister Kenny campaign, March of Dimes, Red Cross, 1950 school referendum (green ballot), political party activities. Republican.

1. (a to f) The tax and revenue problem will undoubtedly be the most important problem to face the legislature. I should expect generally to be guided by the tax study commission's recommendations for meeting the financial needs of the state.

2. People are paying too many taxes now. If more revenue is needed for essential services in the next two years, economy in less essential services should be practiced.

3. Some modification of dedicated funds may be advisable. There may be some justification in retaining such funds where there is a direct relationship between their source and their use. School aid funds, though not legally dedicated, should be safeguarded.

4. Only if the new taxes are specified and if there is a large measure of replacement to reduce present high taxes that drive out employment opportunity in the community.

5. Yes.

6. (a) Yes.

(b) We have a fine metropolitan park system and I am in favor of retaining it. A county park system would be an added burden on the metropolitan taxpayer.

(c) There may be some merit to a consolidation of relief activities but Minneapolis taxpayers should be assured that such a system would not result in further increase in their heavy tax burden.

7. Yes, a county assessor for Hennepin county should result in uniform classification of tax property.

8. (a) I favor a constitutional

Duties of State Legislators

The Minnesota senate has 67 members, one from each of the state's 67 legislative districts. The house of representatives has 131 members. The two bodies write laws of the state.

Representatives are elected for two-year terms, senators for four-year terms. This year all 198 legislative seats are to be filled by election.

The legislature meets every two years for a session of 90 working days—approximately four calendar months. Members are paid \$3,000 for each two-year period.

convention provided the proposed constitution is submitted to the voters for final adoption.

(b) Yes. The adjustment of fair employment practices probably lends itself best to correction through education and conciliation. Ultimate enforcement, however, should be vested in the state courts, with proper safeguards against abuses.

(c) Yes.

(d) Yes.

DESMOND F. PRATT, 46, 3035 Irving avenue S. Married,

three children. Attorney, Bryngelson, Pratt & Bradley. Graduate University of Minnesota, LLB degree. Offices held: alderman 10th (formerly eighth) ward 16 years. Member Interchange club, West High Alumni association, chairman progressive caucus city council two years. Republican.



Pratt

1. (a to f) I would like to see personal property taxes abolished on household property, and equalized and revised on commercial property, and income tax reduced so as to provide incentive for bringing and keeping business and payrolls here, but replacement taxes are probably necessary so as not to lower present low reserve to cities and those activities supported by income tax.

2. I cannot say at present, but I know cities need a better share of present tax revenues.

3. It may be necessary and desirable when figures are presented at the next session.

4. Yes, I favor giving cities broad tax powers and electing and keeping responsible men in the city councils to use those powers. The state should turn over some of its present powers to the cities.

5. I will want to study the latest figures and reports before answering.

6. (a) Yes; (b) yes; (c) needs further study.

7. Yes.

8. (a) Yes; (b) yes, but the exact form of the bill might be very important; (c) yes; (d) yes.

KEITH E. WHITNEY, 35, 2530 Harriet

avenue. Married, two children. Owner-manager, Keith Whitney Contracting Co. Attended University of Minnesota. Air force three and one-half years. Member Loring Park Community council, Loring Business Men's association.



Whitney

1. (a) I would recommend and support a "pay as you go" state income tax (see f).

(b) There are still justifiable increases to be made on iron ore taxes.

(c) This tax works a hardship on many small businesses while permitting other businesses to pay less than their fair share.

(d) These policies should be reviewed.

(e) These commodities are adequately taxed already.

(f) A complete overhauling of our system of taxation should be made with the emphasis upon the income tax, keeping the two principles in mind: ability to pay and incentive to create wealth.

2. I unconditionally oppose a sales tax. Constantly seeking new things to tax is not the way to a healthy economy. Tax wealth as it is created, not as

it is distributed. Unless in the distribution additional wealth (income) is created.

3. No.

4. No comment.

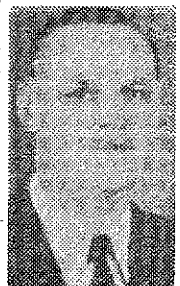
5. Yes.

6. (a) Yes; (b) under the present system in Minneapolis we offer a very worthwhile recreational program; (c) I would support such a measure to promote efficiency and clearly outline responsibility for care of the needy.

7. I would need further study to make a recommendation.

8. I strongly favor all four issues.

F. GORDON WRIGHT, 57, 2912 Chowen avenue S. Married, one child. Lawyer, Wright & Storlie. College graduate, LLB degree. Infantry five years. Public office held: chief counsel, legal bureau, house of representatives, 1951; assistant chief counsel, house of representatives, 1949; clerk judiciary committee, house of representatives, 1935, 1936, 1939, 1941, 1943.



Wright

Member State Bar association, Minneapolis Chamber of Commerce, A. F. & A. M.

Supported Minnesota youth conservation act, uniform reciprocal enforcement of support act, governor's commission of domestic relations. Republican.

1. (a) Increase of per capita to grade schools from income tax fund as state aid to Minneapolis.

(b) No increase. I think the industry is now about taxed to death.

(c) No increase. I favor reduction to encourage business and industry to remain in Minnesota.

(d) Present rates and allocations.

(e) Present rates and allocations—possibly increase.

(f) I favor an interim commission to report to 1957 session on methods of taxation employed by the other 47 states.

2. No. I am opposed to any increase in property taxes. I favor reduction if a balanced budget is possible with it. I do not favor any new taxes, but possibly a sales tax, provided food, clothing and shelter are exempt as protection to persons of low income groups such as retired pensioners and old age recipients.

3. No.

4. No, I believe we should pay as we go. I am opposed to cities having any taxing authority not enjoyed throughout the state.

5. Yes.

6. (a) Yes, the railroad and warehouse commission is not satisfactory; (b) metropolitan or city authority, not a county authority; (c) yes, it should be on a county basis.

7. Yes.

8. (a) Yes; (b) no—compulsion belongs in Russia not America; I believe in equal opportunity for all notwithstanding race, creed or color; (c) yes; (d) yes.

REPRESENTATIVE 35th District

H. P. (PAT) GOODIN and LEO D. MOSIER, incumbents, and **JALMER O. JOHNSON and ARTHUR B. MILLER** will be nominated without contest. Their names will not appear on the primary ballot, but they will be competing for two 35th district seats in the Nov. 2 general election.

REPRESENTATIVE Continued on Page Four