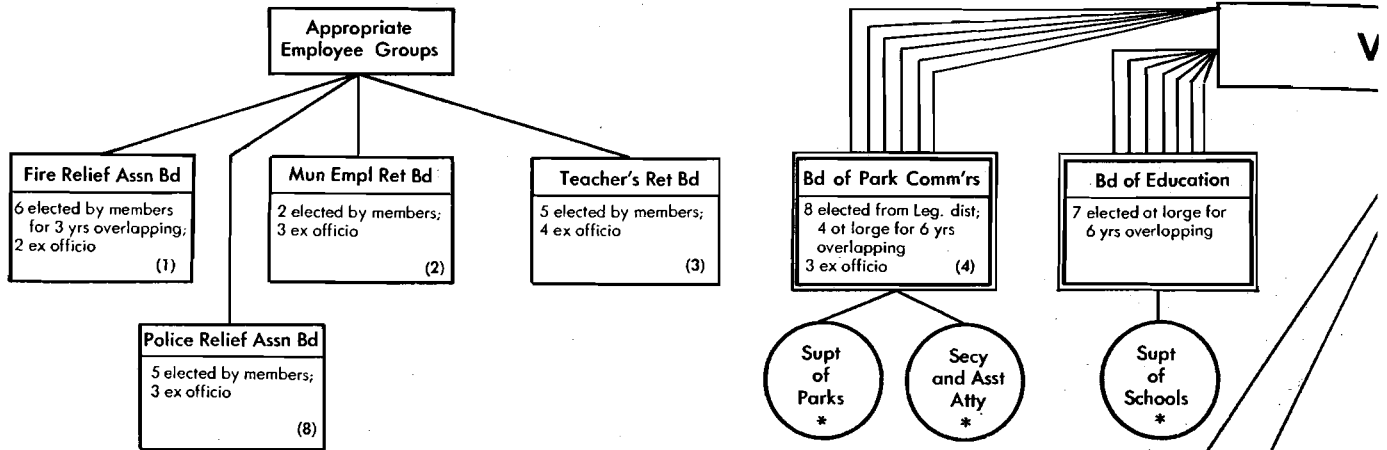
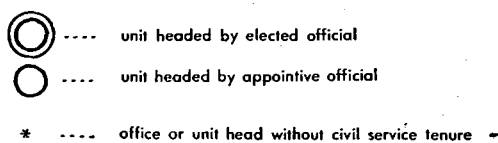
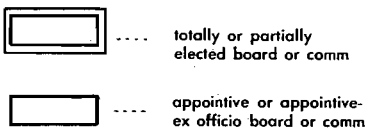
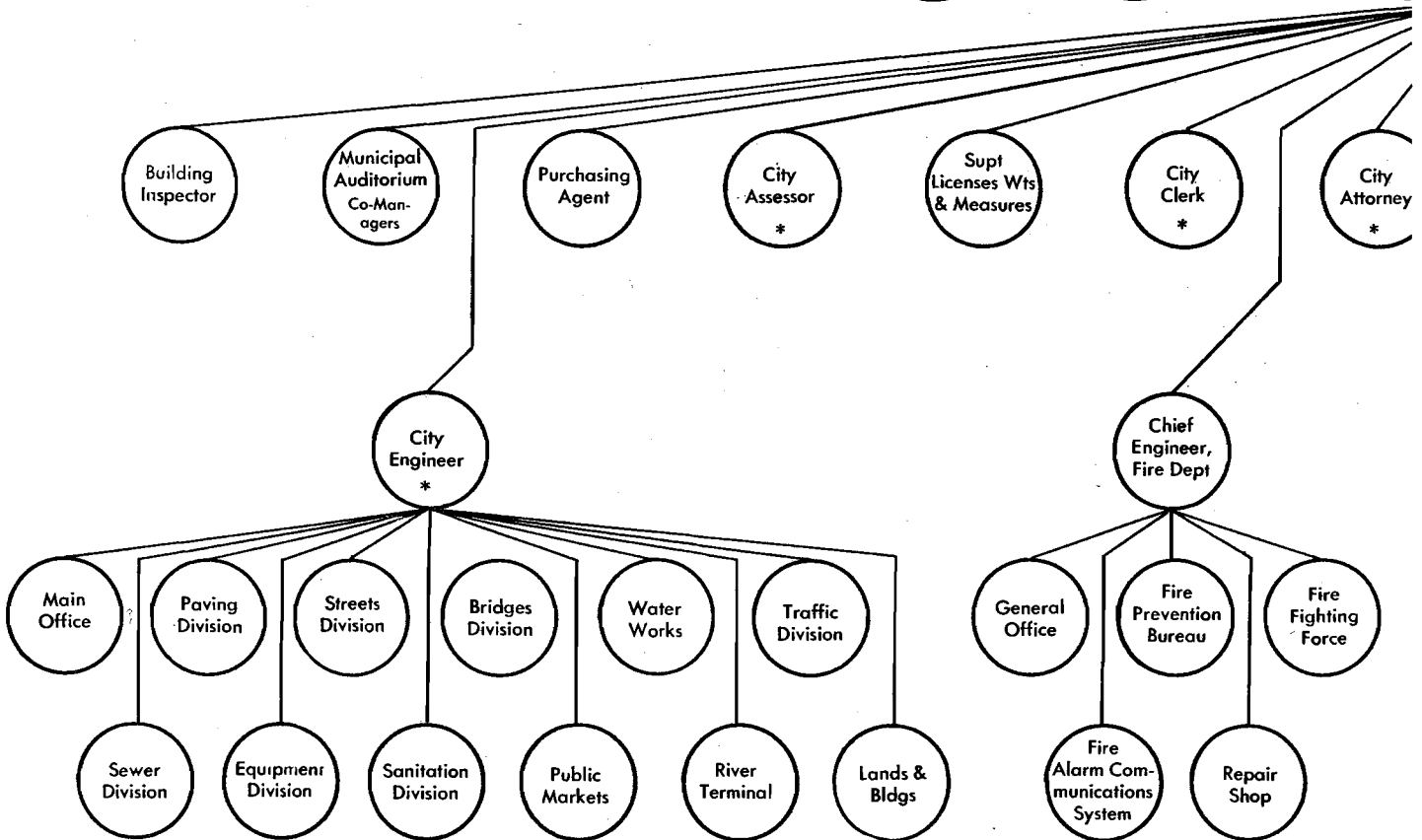


# ORGANIZATION OF MI

WITH DETAIL OF ORGANIZA



Units within dotted rectangle are under complete or substantial budgetary control of the City Council. In addition, City Council has substantial control over the bond issues of the School, Library and Park boards.

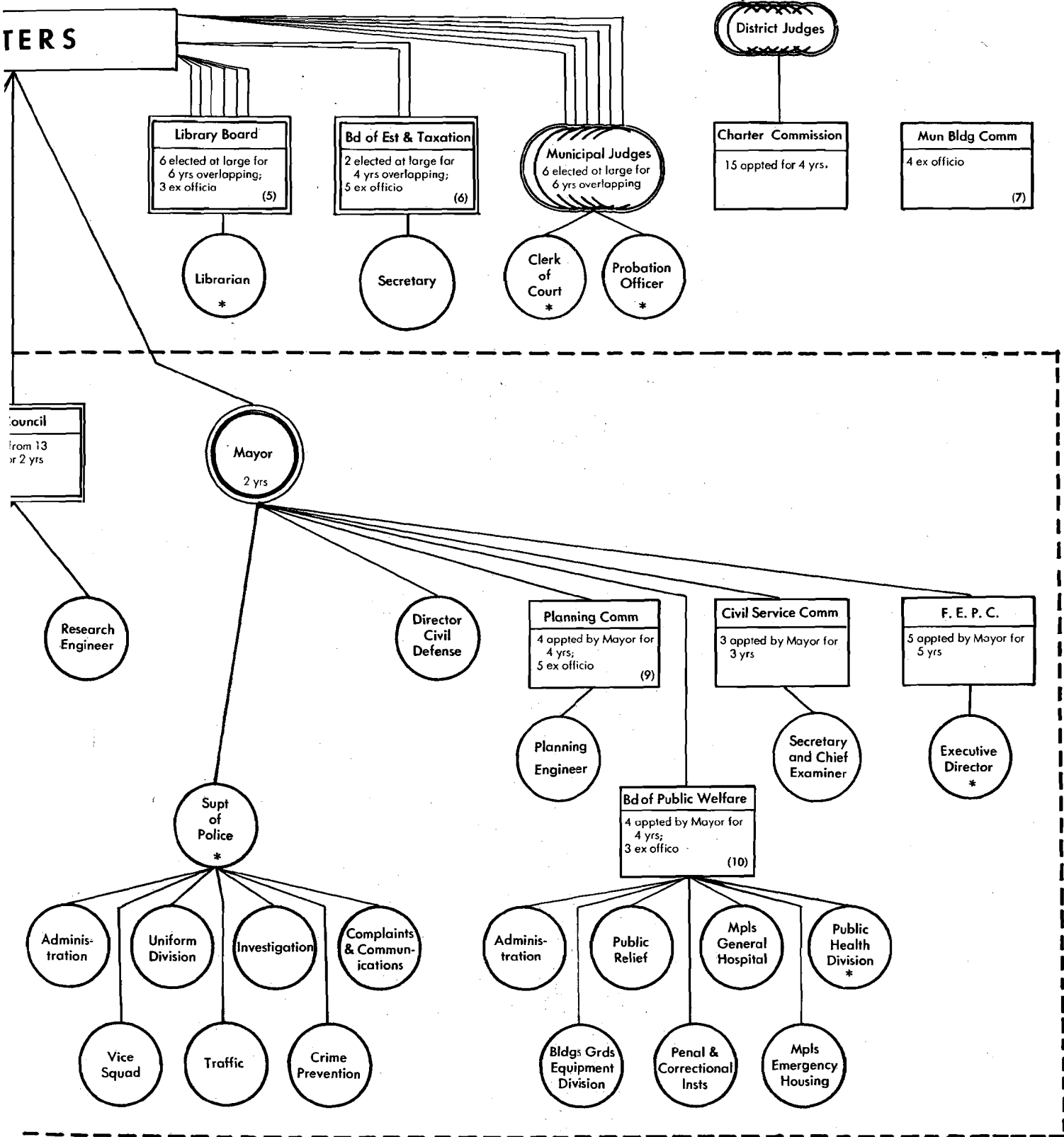


**Ex officio memberships:**

1. City Attorney, Chief Engineer Fire Dept
2. Mayor, Chrmn Council Ways and Means Comm, Compt
3. Mayor, Pres Bd of Ed, Chrmn Council Ways and Means
4. Mayor, two reps of City Council
5. Mayor, Pres Bd of Ed, Pres Univ of Minn
6. Mayor, Comptroller, Chrmn Council Ways and Means Ed and Park Bd

# NEAPOLIS GOVERNMENT

UNDER CITY COUNCIL AND MAYOR



7. Mayor, City Treasurer, Chairmen of County Board, County Auditor  
 8. Mayor, Supt of Police, City Treasurer  
 9. Mayor, reps of County Board, School Board, Park Board, City Council  
 10. Mayor, two reps of City Council

Prepared by  
 CITIZENS LEAGUE  
 of  
 GREATER MINNEAPOLIS  
 601 Syndicate Building

Mayor's appointments are subject to City Council confirmation.

February, 1954